

SECTION 3

CARAVAN ACCESSORIES

(Product Group - 400)

Scoot Guard and Dinnerware	098
Caravan Accessories	099 - 103
First Aid	103
Table Legs and Components	104 - 106
Picnic Tables	107 - 108
Roof Racks and Accessories	109 - 110
Security Handles	111
Bed Ends and Storage Pockets	112
ADCO RV Covers and Tyre Guards	114 - 116
Cleaning Products	116 - 117



CHASSIS EQUIPMENT

(Product Group - 450)

Trail-A-Mate	117 - 118
Jacks and Levels	118 - 122
Jockey Wheels and Accessories	122 - 125
Trailer Locks	125
Steps	126 - 128
Wheel Spats	128 - 129
Hub Kits and Accessories	129 - 130
Bearings and Seals	130 - 132
Level Indicators	133
Caravan Movers	134
Shackles and Couplings	134 - 136
Corner Steadies	136 - 137
Shackle Pins and Nuts	137
Tow Ball Scales and Weight Controls	138
Purpleline Levellers and Security	139 - 141
Milenco Levellers	142
Stone Shields	143 - 144



PREMIER ONE FOAM GUN AND CARAVAN WASH

400-05310

PREMIER ONE FOAM GUN

The Premier One Foam Gun is designed to partner perfectly with Premier One Caravan Wash. Quickly cover your car, RV or trailer in a thick layer of clinging foam that effortlessly removes small build-ups of dust and dirt. The enhanced Foam Gun benefits from a leak proof hose lock male connection that is a perfect fit for the general garden female hose lock connectors, a significant improvement over other foam guns.



Features

- > Exceptional chemical resistance to acidic or caustic cleaners
- > Accurately mixes and sprays foaming chemicals
- > Foam generating wand creates a thick, clinging foam
- > Fan spray deflector included for disinfectants, etc.
- > Durable polymer mixing head with stainless steel screws
- > Quick-set dial selects mixing ratio

400-05340

PREMIER ONE CARAVAN WASH 5L BOTTLE

Premium caravan wash, works in conjunction with the Premier One Foam Gun. This high foaming, PH neutral and environmentally formula is perfect for any dirty RV.



400-05350

CAMCO RV WASH PODS - 6 PER PACK

Camco's easy to use RV Wash Drop-Ins help wash away years of built up dirt and grime on your RV. One convenient, premeasured drop-in dissolves in 11.3 liters of water that can then be used to scrub away at your RV. The re-sealable bag of 6 drop-ins is more lightweight than most liquid or gel cleaners, making it easy to take with you on the road. Cleaner is biodegradable, fragrance-, phosphate- and SLS-free and contains no added dyes.



TRAIL-A-MATE

450-00060

TRAIL A MATE HYDRAULIC JOCKEY WHEEL AND JACK KIT

Specifically designed for use with a caravan chassis, the Trail A Mate provides a unique way of making the hitching and unhitching of your caravan or camper trailer very easy (no matter how low your caravan or camper trailer might be). By removing the pin, the wheel can be replaced by the base plate and an adjustable clamp, thus turning the jockey wheel into a jack. The kit includes: hydraulic jack on shaft, lifting clamp, jockey wheel, base plate with pin, lifting handle, bracket and bars, and a comprehensive instruction guide.



450-00062

TRAIL A MATE SERVICE KIT

Assists with keeping your Trail A Mate performing as it should. Suitable for use on the Hydraulic Jockey Wheel and Jack Kit (part number 450-00060). Comes with instructions.



450-00085

TRAIL A MATE MARK II HYDRAULIC JACK ONLY

A heavy duty jack designed for lifting large caravans, boats and trailers. It comes with a base that enables the Mark II to be used not only as a lifting device but also as a jack stand. Manufactured to Australian and New Zealand standard 2693/2007, it has a lift capacity of up to 35cm.



Specifications

- Working Load Limit: 1500kg
- Aggregated Trailer Mass: 3500kg

* Does not include A-Frame Clamp

450-00087 TRAIL-A-MATE JACK COVER

Keep your Trail-A-Mate jacks in the best possible condition with the Trail-A-Mate Jack Cover. The cover ensures thorough protection all year round from the harsh Australian elements. Made from heavy duty all-weather material, the high-quality construction is made to last.



450-00089 TRAIL A MATE 60MM CLAMP FOR MARK II HYDRAULIC JACK

An optional clamp to enable you to use the Mark II Hydraulic Jack as a jockey wheel instead of having it permanently fixed to your RVs frame.



450-00940 TRAIL-A-MATE JOCKEY WHEEL CLAMP ANTI-THEFT LOCK

Brand new, easy to install anti-theft lock by Trail-A-Mate. Designed to secure their popular Hydraulic Trailer Jacks. This anti-theft device protects your expensive jockey wheels such as Trail-a-Mate or any jockey wheel from being stolen, features:

- > Converts a standard jockey wheel clamp into a lockable clamp
- > Fits in minutes
- > Comes complete with dust cap



450-00102 COAST JACK PADS (80MM)

Made with a durable plastic construction, Coast's Jack Pads are easy to attach. They have a universal fit & a unique channel that prevents ants from crawling up the stabilizer legs. Comes in a set of 4 & includes 4 anti-rattle sleeves.



Specifications

Dimensions: 158L x 138W x 74H (mm)

450-00118 STABILISER JACK PADS

Prevent your jacks or awning legs from sinking into grass or sand. Interlocking for convenient storage with a handy velcro strap. Built in handle for ease of use. Solidly constructed of a durable polypropylene with UV filters & comes in a set of 4.



JACK LEVELLING BASES

450-00120 ALKO BIG FOOT CARAVAN JACK

Alko Big Foot Caravan Jack Steady "Foot" - Anti sinking bases for the bottom of jack legs, comes in a set of 4. 1.0: 80mm



450-00121 ALKO SINGLE FOOT PIECE

Single Foot Piece to Suit Alko Big Foot Caravan Jack Steady.



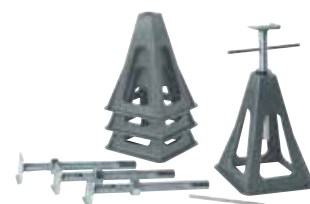
450-00127 FIAMMA PLATES PRO (GREY)

A set of four anti-sinking bases with four plastic pins to fasten to the RVs drop down legs. They can be a permanent fit if required, simply leave the pin in place.



450-00132 FIAMMA PLASTIC STAKKA JACKS (GREY)

Made from UV-resistant plastic, these grey plastic jacks have an adjustable height (from 31 - 44 cm). Comes in a set of four jacks, each weighing 0.8kg. Each jack has a max load of 750kg.



450-00152
RUBBER JOCKEY WHEEL RECEIVER

Acts as a chock for your jockey wheel. Has raised edges to ensure your jockey wheel does not roll once it is in the stationary position.



450-00160
ALUMINIUM STABILISING TRAILER JACK

Features a heavy duty non-corroding, cast aluminium base with steel screw assembly & a permanent handle. Each jack has a weight capacity of 2721kg. Comes in a set of 4.



CAMCO WHEEL CHOCKS

Solidly constructed of durable hard plastic with UV inhibitors, these yellow chocks are ideal for caravans & motor homes. They are sold separately & are available in two sizes.

450-00210
WHEEL CHOCK

Suitable for wheel diameters of up to 26" (66cm).



450-00220
SUPER WHEEL CHOCK

Suitable for wheel diameters of up to 29" (74cm).



450-00232
CAMCO TRAILER AID PLUS

Trailer-Aid is the fast, safe and easy way to change a trailer's flat tyre. Made from lightweight super strong polymer, Trailer-Aid is easy to travel with and makes changing your trailer tyre simple, even if you're alone. Trailer-Aid Plus is designed specifically for recreational trailers and gives an additional 1 inch lift. The extra 1 inch lift makes Trailer-Aid Plus handy when performing maintenance on brakes, wheels, and axles.



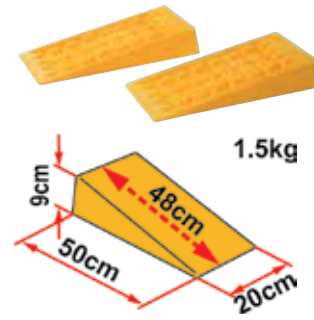
Specifications

Dimensions: 610L x 140W x 139.7H (mm)
Holds up to 6,800kg.

FIAMMA LEVEL SYSTEMS

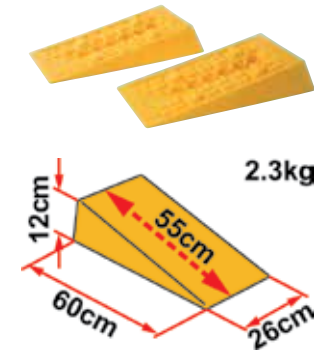
450-00260
MAGNUM LEVELS

Lightweight blocks to level your RV that won't crack like wood. It has a self-locking overlapping system & has a max axle weight of 8t. Comes in a set of 2.



450-00262
JUMBO LEVELS

Ideal for RV's with twin tyres, the jumbo system also has the overlapping feature & has a max axle weight of 14t. Comes in a set of 2.



450-00272
LEVEL BAG

Made of washable polyester, it has a comfortable carry belt making transporting your Level Up's & Level Up Jumbo's easy.

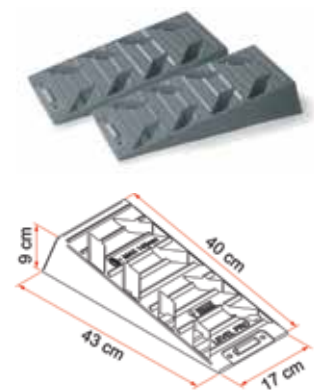


Specifications

Dimensions: 185 x 245 x 650 (mm)

450-00274
LEVEL PRO

Now available in grey, the Level Pro is great for caravans or trailers with small wheels (up to 145mm tread width). Made from HDPE that is also UV-resistant, they have a max axle weight of 5t. They can also be stacked on top of each other if the need for extra height arises. Comes in a set of 2.



Specifications

Weight: 0.8kg each

450-00276

LEVEL-UP RAMPS

Fiamma's bestselling ramps are now available in grey. They are still lightweight, strong and anticorrosive, making these the best levelling choice for your RV. The Level Up has 3 levels with a ridged surface to grip the tyres in place. They have a max axle weight of 5t and come in a set of 2.



Specifications

Weight: 1.45kg each

450-00278

ANTI-SLIP PLATE

Now available in grey, these anti-slip plates lock onto a Fiamma ramp to provide extra grip for your RV tyres. It is especially handy on paved surfaces. Weighs just 100g and is available as a set of 2.



Specifications

Dimensions: 100W x 160L (mm)

450-00279

FIAMMA CHOCKS FOR FIAMMA LEVELS (GREY)

Sold in pairs, chocks are used with Level Ups, Level Pros or Level Magnums to secure the wheels during long stopovers. They come with steel hooks and are solidly made from UV-resistant polyethylene.



450-00280

FIAMMA LEVEL BAG S

A smaller version of the Level Bag (part number 450-00272), the Level Bag S is suitable for use with Level Pros and Level Magnums.



Specifications

Dimensions: 150H x 220W x 570L (mm)

EXPLORE LEVELLING SYSTEM

450-00390

HAIGH DUAL WHEEL CHOCK 'N LOCK

The Explore™ Chock 'n Lock is a revolutionary Australian Made and Owned innovation that locks, chocks, and stabilises dual axle caravans and trailers. Using the latest in injection-moulding technology, the Chock 'n Lock is made from a heavily reinforced plastic composite that is durable enough to last a lifetime. With a simple turn of a wheel, the Chock 'n Lock stabilises the suspension and eliminates the sway and movement commonly associated with dual axle caravans and trailers. The ergonomic turning mechanism allows for easy fitment by all ages without causing hand strain, and unlike similar products that require crawling underneath the trailer to fit, this can be installed from a kneeling or comfortable sitting position. The Chock 'n Lock is an ideal investment for anyone who owns a dual axle caravan or trailer. Two extension plates are included and can be added or removed depending on wheel spacing, with additional pairs sold separately.



Suitable for use on most dual axle platforms, including caravans, boats, trailers, and horse floats.

- > Easy to install
- > Heavy duty construction
- > Ergonomic turning mechanism
- > Integrated locking cap (padlock not included)
- > Expandable with extension plates (2x included, additional pairs sold separately)
- > Can be fitted both vertically or horizontally depending on the size and profile of your tyres

450-00396

EXPLORE CVL2 LEVELLING RAMP (PAIR)

Made in Australia and specifically designed for tandem axle trailers, these levellers have a 5 tonne capacity. Super strong, they're able to raise a wheel up to 100mm (without the use of a jockey wheel)! They feature an extra wide tread to cater for tyre widths of up to 250mm and are lightweight at just 1.8kg each.



Specifications

Dimensions: 140H x 570L x 250W (mm)

450-00398

WHEEL CHOCKS TO SUIT CVL2 LEVELLING RAMPS



450-00399

STORAGE BAGS FOR CVL2 LEVELLING RAMPS

Designed specifically for the CVL2 range, the storage bag is made from tough polyester with a PVC backing. Each bag will fit a set of CVL2 levellers and a set of wheel chocks.





Essential for all Caravanners, Coast's range of RV levelling solutions, highly visible they are made from UV resistant polypropylene to withstand prolonged outdoor use.

450-00460
COAST RED STD
SINGLE WHEEL LEVEL
& CHOCK KIT

Each kit comes with 1 x wheel ramp with grip spikes, 1 x chock to suit and 1 x anti-slip plate. Comes with a carry bag.

- > Highly Visible
- > Rated to 2 ton
- > Includes handy storage bag
- > Level ramp has a solid base with anti-slip spikes which means that it will not sink into soft ground
- > Anti-Slip plate clips onto the leading edge of the level ramp
- > Manufactured from tough UV resistant polypropylene plastic for superior strength
- > Kit includes level, chock and anti-slip plate, with bonus storage bag
- > Two ramps can link together side by side. Ideal for Dual Axle Motorhomes

Specifications

Level ramp dimensions: 520mm (l) x 200mm (w) x 125mm (h)
 Chock dimension: 150mm (l) x 120mm (w) x 100mm (h)



450-00462
COAST RED SINGLE
MULTI LEVEL RAMP

Each pack contains:
 x1 Tri-Level Wheel Ramp

- > High visibility
- > Each level has three different heights
- > Rated to 2 ton
- > Includes a handy storage bag
- > Made from UV-resistant polypropylene
- > Helps to level caravans or motorhomes on uneven ground
- > Lightweight
- > 3 height levels 4, 7 & 10 cm
- > Anti-slip surface for extra grip
- > Suitable for vehicles up to 2 ton

Specifications

Level ramp dimensions: 610mm (l) x 210mm (w) x 120mm (h)



450-00464
COAST RED STD SINGLE WHEEL
CHOCK

Suitable for use with the standard wheel ramp part number 450-00460. These are sold singularly.

Specifications

Chock dimensions: 150mm (l) x 120mm (w) x 100mm (h)



450-00466**COAST RED TYRE SAVERS 2-PACK**

- > Prevents flat spots on your tyres
- > Suitable for tyres with diameters from 10" to 20"
- > Works with most types of security wheel clamp
- > Suitable as a "Stop" by bolting to garage floor
- > Suitable for use with caravans, trailers & any vehicle that is stationary for long periods
- > Two ramps can link together side by side. Ideal for Dual Axle Motorhomes

**Specifications**

Tyre Saver dimension: 440mm (l) x 200mm (w) x 40mm (h)

COAST JOCKEY WHEELS**450-10000****COAST 6" JOCKEY WHEEL + STD CLAMP****Specifications**

Capacity: 340kg
Lifting height(mm): 254
N.W: 4.5kg

**450-10002****COAST 6" JOCKEY WHEEL + SWIVEL CLAMP****Specifications**

Capacity: 340kg
Lifting height(mm): 254
N.W: 6kg

**450-10004****COAST 8" JOCKEY WHEEL + STD CLAMP****Specifications**

Capacity: 340kg
Lifting height(mm): 254
N.W: 6.3kg

**450-10006****COAST 8" JOCKEY WHEEL + SWIVEL CLAMP****Specifications**

Capacity: 340kg
Lifting height(mm): 254
N.W: 7.5kg

**450-10008****COAST 10" PNEUMATIC JOCKEY WHEEL + STD CLAMP****Specifications**

Capacity: 340kg
Lifting height(mm): 254
N.W: 6.2kg

**450-10010****COAST 10" PNEUMATIC JOCKEY WHEEL + SWIVEL CLAMP****Specifications**

Capacity: 340kg
Lifting height(mm): 254
N.W: 7.5kg



ALKO JOCKEY WHEELS

450-00600

ALKO 6" JOCKEY WHEEL

Has a standard clamp with a solid rubber tyre (150D x 50W mm).



450-00610

ALKO 6" JOCKEY WHEEL

Has a locking pin swivel bracket with a rubber tyre (150D x 50W mm).



450-00620

ALKO 8" JOCKEY WHEEL

Has a standard clamp with a rubber tyre (200mm diameter) & steel rim.



450-00632

ALKO 10" JOCKEY WHEEL

Has a standard clamp with a solid tyre (250mm diameter), suitable for softer ground thanks to the larger wheel diameter.



450-00642

ALKO 10" JOCKEY WHEEL

has a large locking pin swivel bracket with a solid tyre (250mm diameter).



450-00644

ALKO THRUST BEARING

Used on 6", 8" and 10" Alko jockey wheels and power mover.



450-00646

ALKO JOCKEY WHEEL HANDLE

Suitable for pin-type handles.



450-00660

ALKO POWER MOVER

Has a ratchet mechanism for added convenience & a solid tyre (250mm diameter).



450-00684

ALKO 6" SOLID RUBBER WHEEL



450-00686

ALKO 8" SOLID TYRE WHEEL



450-00698**SOLID RUBBER TWIN JOCKEY WHEEL (WITH CLAMP)**

Perfect for using in combination with your caravan or trailer mover and is suitable for use with single axle and dual axle trailers. The benefit of using the Twin Jockey Wheel is that it does not dig in or jam up on surfaces like some single jockey wheels. It greatly improves the operation on a single and dual axle caravan/ trailer mover regardless of the caravan/ trailer weight. The Twin Jockey Wheel has a heavy duty clamp and the wheels are 10" solid rubber. The tyre has a steel centre with a bronze bush bore while the jockey wheel itself is zinc plated to deter rust.

**Specifications**

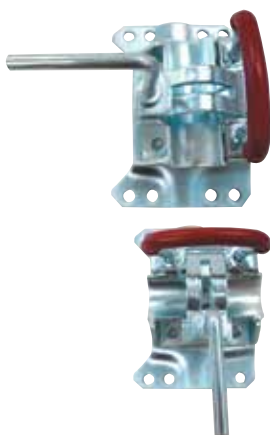
Weight: 17kg
Lift Capacity: 225mm
Static Load Capacity: 1000kg

JOCKEY WHEEL CLAMPS**450-00700****STANDARD BOLT ON CLAMP**

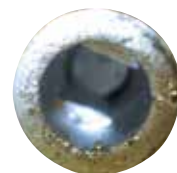
(no swivel function) to suit jockey wheel.

**450-00702****ADJUSTABLE SWIVEL JOCKEY WHEEL BRACKET**

Has a locking pin swivel function (150H x 210W mm).

**WINDER HANDLES****450-00711****SLOTTED STYLE WINDER HANDLE TO SUIT REAR JACKS****Specifications**

Length: 700mm (including the handle)

**450-00712****HEX STYLE WINDER HANDLE TO SUIT CORNER JACKS****Specifications**

Length: 800mm (including the handle)

**450-00714****HEX WINDER HANDLE****Specifications**

Length: 1150mm (including the handle)

**ARK JOCKEY WHEELS****450-00720****150MM (6") STANDARD WHEEL**

Has a locking swivel u-bracket & a 350kg load capacity.

Specifications

Maximum Extension: 250mm

**450-00722****200MM (8") STEEL RIM RUBBER WHEEL**

Has a locking swivel u-bracket & a 350kg load capacity.

Specifications

Maximum Extension: 250mm



450-00742

ARK XO SERIES JOCKEY WHEEL

Ark's new Extreme Off road Series (XO) Jockey Wheel is probably the toughest, most advanced Jockey Wheel in Australia today. But not only is it tough, it's also versatile - with multiple height options, a highly maneuverable trailing yoke design and 5 different yoke locking positions.



- > Magnetic, removable, side-winding handle
- > Heavy duty body with 750kg rating
- > 4 x adjustable height positions
- > Heavy duty swivel clamp
- > Dual wheel with sealed bearings & off road tread
- > Rust resistant finish

450-00750

6" SOLID RUBBER WHEEL TO SUIT JOCKEY WHEEL

Specifications

Wheel diameter: 140mm
Tread width: 40mm



450-00910

TRAILER COP ANTI-THEFT COUPLING LOCK

The ball type anti-theft trailer lock that prevents thieves from towing your trailer away by expanding in your coupler. Suitable for use on 50mm couplers, it takes just a minute to install.



450-00924

KOVIX TRAILER HEAVY DUTY PADLOCK

Built for maximum security, this unique alarmed trailer lock is the ultimate deterrent to would-be thieves. Designed by Kovix Australia the heavy duty KTR-18 alarmed trailer lock is made from 304 grade stainless steel. Resistant to impact, drilling and cutting this ultra-strong trailer lock features an 18mm pin with an anti-cutting sleeve.



This smart lock's alarm can be turned on or off and is triggered by a motion sensor that activates the 120dB alarm for 10 seconds. The lock is rust resistant and its electronics are water proof so it can be left out in the elements. Built to suit standard 50mm ball hitches, Off Road D035 and Treg-style block hitches, the KTR-18 is as versatile and smart as it is tough.

Features

- > Anti-Impact and Drill Resistant
- > Weatherproof Electronics (IP67)
- > Removable Ball to Fit a Wide Range of Hitches
 - (H 100mm x W 155mm x D 35mm - Inside W 80mm)
- > Built in Loud Alarm - Sounds at 120dB
- > Long Life 3V Lithium Battery Included
- > Double Locking Pin System

450-00926

MILENCO AUSTRALIAN HITCHLOCK WITH CHAIN LOCK

- > Tough and dependable steel
- > Clamps over tow ball and secured chains
- > Complete with 3 Keys



450-00931

DUAL TRAILER COUPLING LOCK HEAVY DUTY - INC. PADLOCK

Secure your parked caravan to the towing vehicle and secure it even when its not attached to a vehicle,



Features

- > Heavy duty coupling lock
- > Works when hitched and unhitched.
- > Simple and easy to use
- > Supplied with high-quality padlock
- > Suits Australian 50mm ball couplings
- > Suitable for use with caravans, trailers and horse floats

450-01050**CAMCO FOLDING STEP**

Holds up to 136kg (300lbs) & has a large non-slip surface. Folds flat for easy storage (grey).

**450-01070****MGI MILENCO GIANT SINGLE STEP - 200KG RATED**

Features a giant tread area that strictly meets safety guidelines to allow a safe carry load of 200kg, skid resistance, and a tread that is non-slip, even when wet. Produced using 100% recycled plastic.

**Specifications**

Tread Size: 455mm x 363mm
Height: 265mm
Weight: 1.7kg

450-01072**MGI MILENCO DOUBLE STEP - 200KG RATED**

Emphasizes safety with non-slip tread and highly skid-resistant upper tread surface for maximum safety in both wet and dry conditions. Fitted with four rubber feet to prevent skidding on asphalt and peg holes for use on grass.

**Specifications**

Tread Size: 360mm x 220mm
Height: 185mm x 365mm
Weight: 2.9kg

450-01100**COAST ALUMINIUM FOLDING STEP**

Made from sturdy aluminium, this step is extra wide for stability and safety. It has non-skid strips on the tread to ensure no nasty slips. The legs fold out/ in making it extra convenient whilst travelling. Rubber feet not only ensure that the step does not move while being used but it also serves to protect the surface the step is being used on.

**Specifications**

Weight Rating: 150kg

450-01104**COAST FOLDING ALUMINIUM RV STEP (220KG CAPACITY)**

This folding aluminium RV Step features a light weight and sturdy design and can support up to 220kg. It has anti-slip strips and grippy rubber feet for extra stability.

**Specifications**

Folded size: 47.5 x 30 x 7cm
Open size: 47.5 x 30 x 22.5cm
Net weight: 2.2kgs

450-01106**COAST HEIGHT ADJUSTABLE - FOLDING ALUMINIUM RV STEP (150KG CAPACITY)**

This folding aluminium RV Step features a light weight and sturdy design and can support up to 150kg. It has anti-slip strips, grippy rubber feet for extra stability and adjustable feet that offer four height adjustments.

**Specifications**

Folded size: 48.5x36.8x7cm
Open size: 18.5 - 19.8 - 21 - 22.5cm
Net weight: 2.6kgs

450-01405**SINGLE PULL-OUT CARAVAN STEP****Specifications**

Step Width: 514mm
Tread Depth: 180mm
Closed Dimensions: 300D x 530W x 180H (mm)
Mounting plate to top of step: 145mm

450-01415**DOUBLE PULL-OUT CARAVAN STEP****Specifications**

Bottom Step Width: 520mm
Bottom Step Tread Depth: 180mm
Top Step Width: 510mm
Top Step Tread Depth: 305mm
Closed Dimensions: 380D x 590W x 310H (mm)
Mounting plate to top of step: 180mm
Mounting plate to the top of bottom step: 305mm

450-01530
FIAMMA PLASTIC
STEP SMALL

Step in & out of your RV safely! Has a non-skid surface & is made from UV resistant HD polyethylene. Holds up to 150kg & comes in grey.



450-01552
FIAMMA MAGNUM
PLASTIC STEP

An improved version of Fiamma's best selling step. Made from UV resistant HD polyethylene for great stability & strength. Comes in grey & can hold up to 200kg.



450-01570
FIAMMA CLEAN STEP

Suitable for use on electric or manual steps, it helps to keep your RV clean. Made from durable plastic it has a grass appearance & is supplied with springs for installation. Can be adapted to fit steps from: 380 x 400mm up to 450 x 400mm. Available in green.



450-01990
WHEEL NUT

Wheel nut for alloy rim



Specifications

Dimensions: 1/2" thread diameter with a 2mm pitch

450-02012
LIPPERT SPARE TYRE
WINCH WITH OFFSET
CABLE

The Lippert Components Spare Tyre Winch is the perfect bolt-on solution for your spare tyre carrier. Simply bolt on the winch (hardware not included) under your trailer or RV. The offset cable allows for a more compact design which better utilizes leverage.



- > Spare tyre winch bolts on to chassis/frame for easy and convenient access to spare tyre.
- > Using a crank handle (not included), spare tyre can be stored underneath chassis
- > Mounting hardware not included
- > Can be used on RVs, trailers and trucks with enough clearance to store additional spare tyre.

450-02020
COAST SPARE WHEEL
CARRIER 6 STUD
SILVER

Coast to Coast very own Spare Wheel Carrier to suit popular 4, 5 and 6 stud wheels. Ideal for caravans, campers, horse floats and all trailers.



Features

- > Heavy duty galvanized spare wheel mount
- > Suits 4, 5, and 6 stud wheels
- > Comes ready for easy installation and simple use
- > Designed to fit 4 and 5 inch A frames.

NUOVA MAPA ELECTRIC STEPS

This series of innovative electrical steps are made from galvanized steel for durability & stability. The footrests are made with anodized aluminium (so they won't rust) & are spaced at a comfortable height for your convenience. Order separate wiring loom as required.

450-02100
12V SINGLE ELECTRIC
STEP



Specifications

- Step Width: 575mm
- Step Tread Depth: 210mm
- Step Weight: 7.8kg
- Step to Mounting Plate: 197mm

450-02110 12V DOUBLE ELECTRIC STEP

Order separate wiring loom as required.



Specifications

Step Width: 575mm

Step Tread Depth: 210mm

Step Weight: 11.7kg

Bottom Step to Top Step: 200mm Top

Step to Mounting Plate: 197mm

Width from center hole to center hole on the mounting plate: 530mm

450-02120 WIRING HARNESS WITH AUTO CLOSE ON IGNITION

If you forget to close your step, on ignition of your vehicle, the step will close automatically.



450-02130 STANDARD WIRING HARNESS WITH SWITCH

A standard in/ out switch which can be installed near the entry to engage or disengage the step.



450-02140 MANUAL SINGLE STEP

Made with the same quality and precision as the electric steps, the Manual Single Step holds up to 200kg. It requires minimal effort to open or close as it is spring loaded.



Specifications

Step Width: 560mm

Step Weight: 5.5kg

Step to Mounting Plate: 197mm

450-02150 SPRINGS FOR MANUAL STEP

Sold in pairs.



450-02300 RV WRAP AROUND STEP RUG (GREY)

Adjusts to fit almost any RV step. Just wrap it around your existing step & hook springs into the holes that fit your step. No screws, glues or tools needed! Helps to keep your RV clean.



WHEEL SPATS

450-01690 JAYCO STARCRAFT SINGLE WHEEL SPAT

White (sold singularly)



450-01692 JAYCO WESTPORT SING

Metallic blue (sold singularly)



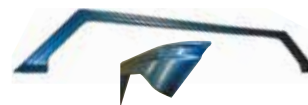
450-01694 JAYCO EARLY HERITAGE

White (sold singularly)



450-01696 JAYCO WESTPORT DOUBLE WHEEL SPAT

Metallic blue



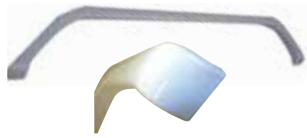
450-01698 JAYCO FREEDOM SINGL

White (sold singularly)



450-01699**JAYCO LATE MODEL
HERITAGE DOUBLE
WHEEL SPAT**

White (sold singularly)

**450-02498****JERRY CAN HOLDER**

Has a lockable chain.

**450-02500****ADJUSTABLE JERRY CAN
HOLDER**

Designed to fit many jerry can sizes & has an anti-theft adjustable locking bar.

**450-02510****WELD ON JERRY CAN
HOLDER**

An economical solution to jerry can storage, this metal strap type holder is zinc plated to help minimise the occurrence of rust.

**Specifications**

Dimensions: 370W x 180L x 295D (mm) Weight: 3kg

450-03010**BRAKE MAGNET KIT**

Electric Brake Magnet Oval Type - comes in a box complete with springs, suits DEXTER 10" x 2.25" / Hayes 10" x 2.25" & 1.625" (after 1987 up to 1993)

**ELECTRIC DRUM BRAKES**

Electric drum brakes are an efficient & reliable braking system that provides smooth braking when used by a vehicle mounted with a brake controller.

450-03030**ALKO 10" X 2-1/4" RIGHT HAND
ELECTRIC DRUM BRAKE**

With park brake provision.

**450-03032****ALKO 10" X 2-1/4" LEFT HAND
ELECTRIC DRUM BRAKE**

With park brake provision.

**ELECTRIC HUB DRUMS**

These hub drums are machined for slimline bearings. Note when replacing magnets, it is recommended that the inside face of the hub drum be re-machined or the magnet performance will be affected.

450-03034**ALKO 10" X 2-1/4"
FORD 5 STUD
PATTERN ELECTRIC
HUB DRUM**

Machined for slimline bearings.

**450-03036****ALKO 10" X 2-1/4"
LANDCRUISER 6
STUD PATTERN
ELECTRIC HUB DRUM**

Machined for slimline bearings.



450-03065

ALKO BOXED 10" BRAKE SHOE KIT

Used to support and move the braking lining material, this electric brake shoe kit consists of two primary and two secondary brake shoes conveniently packaged in a box.



BEARING KITS

Bearings comprise of two parts, the cup which is pressed into the hub & the cone, this is the part that contains the rollers of the bearing. Bearings should always be replaced in pairs.

450-03069

ALKO PARALLEL BEARING KIT

A Japanese caravan bearing kit, rated to 1600kg per pair. Always ensure that only quality studs and nuts are used, which are correct for the wheel selected. Comes in a skin pack.



450-03070

ALKO SLIMLINE/FORD CARAVAN BEARING KIT (JAPANESE)

Slimline Components Include

1x L68110 cup, 1x LM12710 cup, 1x L68149 & 1x LM12749 cone.



450-03072

ALKO LM/HOLDEN TRAILER BEARING KIT (JAPANESE)

LM Components Include

1x LM67010 cup, 1x LM11910 cup, 1x LM67048 cone, 1x LM11949 cone, 1x grease cap, 1x seal & 1x split pin



ELECTRIC DRUMS

Brake drums are selected by the drum diameter, the wheel drilling pattern and in the case of hub drums, the machining profile and appropriate bearings. It is important to select the appropriate brake capacity and seek advice on the correct axle machining profile and bearing configuration to carry and stop the load on the wheel to which it is fitted.

450-03084

ALKO 10" X 2-1/4" LANDCRUISER PARALLEL ELECTRICAL BRAKE DRUM



450-03086

ALKO 10" X 2-1/4" HOLDEN HT SLIMLINE ELECTRICAL BRAKE DRUM



450-03088

ALKO 10" X 2-1/4" HOLDEN HQ LM SLIMLINE ELECTRICAL BRAKE DRUM



ARK BEARING KITS

450-03100

MARINE BEARING KIT TO SUIT HOLDEN TYPE BEARINGS

4 Piece Blister Pack



450-03102

MARINE BEARING KIT TO SUIT FORD TYPE BEARINGS

4 Piece Blister Pack



450-03110
TRAILER BEARING KIT TO SUIT HOLDEN TYPE BEARINGS
 5 Piece Blister Pack



450-03112
TRAILER BEARING KIT TO SUIT FORD TYPE BEARINGS
 5 Piece Blister Pack



BEARING SEALS

450-03120
WATER PROOF BEARING SEAL TO SUIT HOLDEN TYPE BEARING



450-03122
WATER PROOF BEARING SEAL TO SUIT FORD TYPE BEARING



450-03124
BEARING SEAL TO SUIT HOLDEN STANDARD BEARING



450-03126
BEARING SEAL TO SUIT FORD STANDARD BEARING



BEARING CONES

450-03128
BEARING TO SUIT HOLDEN 1-1/4" CONE
 For 39mm round or 40mm square axles.



450-03130
BEARING TO SUIT FORD (SLIM LINE) 1-3/8" CONE
 For 45mm square axles.



450-03132
BEARING TO SUIT HOLDEN 3/4" CONE
 For 39mm round or 40mm square trailer axles.



450-03134
BEARING TO SUIT FORD (SLIM LINE) 7/8" CONE
 For 45mm square trailer axles.



COAST SEALS

Coast's range of seals are available in two grades. Standard includes a spring under the inner lip that seals against the axle. Premium heavy duty includes a firmer better-quality firmer spring providing a more durable seal in the long run.

Coast's range of bearings and seals allows for servicing of the following:

- > Holden/LM type trailer axles up to 1000kg in both standard and marine seals
- > Ford/Slimline type trailer and caravan axles up to 1450kg in both standard and marine seals
- > 1.5tonne/Composite caravan axles up to 1500kg with standard seals
- > Parallel caravan axles up to 1600kg with standard seals
- > 2 tonne and 2.5 tonne caravan axles up to 2500kg with standard seals

450-03200
COAST HUB BEARING STD OIL SEAL - HOLDEN



450-03202
COAST HUB BEARING PREMIUM
H-DUTY OIL SEAL - HOLDEN



450-03206
COAST HUB BEARING PREMIUM
MARINE OIL SEAL - HOLDEN



450-03208
COAST HUB BEARING STD OIL
SEAL - FORD/SLIMLINE



450-03210
COAST HUB BEARING PREMIUM
H-DUTY OIL SEAL - FORD/
SLIMLINE



450-03212
COAST HUB BEARING PREMIUM
MARINE OIL SEAL - FORD/
SLIMLINE



450-03214
COAST HUB BEARING OIL SEAL
- 1.5 TONNE



450-03216
COAST HUB BEARING OIL SEAL
- 2/2.5 TONNE



450-03220
COAST STD HUB REPLACEMENT
GREASE CAP T/S HOLDEN-FORD
45.2MM DC-1



450-03222
COAST HUB REPLACEMENT
GREASE CAP T/S PARALLEL/1.5/2/2.5
TONNE. 63 MM DC-2



NSK JAPANESE BEARINGS

These high-quality Japanese bearings use conical rollers guided by a back-face rib on the cone and are capable of taking high radial loads and axial loads in one direction. They are ideal for use in servicing and repairing trailers and RVs.

450-03230
NSK JAPANESE BEARING
- HOLDEN/LM INNER



450-03232
NSK JAPANESE BEARING
- HOLDEN/LM OUTER



450-03234
NSK JAPANESE BEARING
- FORD/SLIMLINE INNER



450-03236
NSK JAPANESE BEARING
- FORD/SLIMLINE OUTER



450-03238
NSK JAPANESE BEARING
- 2 TONNE INNER



450-03240
NSK JAPANESE BEARING
- 2 TONNE OUTER



450-03504**TREG T BAR PIN AND LOCK**

- > Locks the trailer to the vehicle or locks the trailer when un-hitched.
- > Hardened 3/4" steel pin
- > Zinc plated for corrosion protection
- > Precision Zinc alloy screw pin lock with 1/4" pin and 2 keys.

**450-03506****TOW BALL SPANNER**

- > Tow Ball Sizes 33mm
- > Adj. Ball Mount Bolts 24mm
- > WDH Head Bolts
- > WDH Chain Bracket Bolts
- > D Shackle Pins

**450-03520****COUPLE - MATE REVERSING HITCH AID**

An easy to install device which makes hitching your caravan or trailer a breeze. The side arms 'guide' the trailer hitch towards the tow ball, thus preventing damage to the tow vehicle. Made from double dipped, zinc plated steel.

**450-03530****COUPLE-MATE TREG PIN LOCK**

Featuring a latch lock with a screw lock for added security, the treg pin lock is used to lock the trailer onto your tow vehicle, or simply lock the trailer when left unattended. It has a 3/4" diameter for use with treg couplings. Note that the lock mechanism needs lubricant periodically to ensure correct operation.

**450-04006****SCREW ON LEVEL**

Screw-mounted level provides front-to-back or side-to-side levelling. Comes in a set of 2.

**450-04010****2-WAY PLASTIC TEE BUBBLE LEVEL**

Screw-mounted level, providing front to back or side to side levelling. Sold separately.

**450-04030****BULLSEYE MULTI-DIRECTIONAL LEVEL**

Round, dome-shaped level reads 360o at once.

**450-04032****CAMCO CURVED BALL LEVEL**

A screw-mounted level, with graduated markings for accurate front-to-back or side-to-side levelling. Comes in a set of 2.

**450-04100****EZYLEVEL CARAVAN LEVEL INDICATOR**

The Ezylevel is an electronic caravan/pop top levelling device that comprises of two components: a handheld receiver and a transmitter which requires permanent placement at a central spot inside your RV (usually inside the doorway or in the front boot). At the touch of a button, the Ezylevel will show you which side (front, back, left or right) needs to be raised, thus taking the guess work out of where to place your levelling ramps or whether or not to raise the jockey wheel. The receiver is easy to read thanks to the light indicators and it operates on x4 (two in the receiver and two in the transmitter) AA batteries, so there is no need to hardwire anything.

**450-04098****JAYCO MUD FLAP**

Sold singularly, these are a great way to minimise dirt splatter or simply to replace your Rvs current mud flaps.

**Specifications**

Dimensions: 300W x 405H (mm)

REICH ECO MOVE CONTROLS

Move your caravan or trailer with minimal effort - all at the touch of a button. Suitable for single & twin axle towable vehicles, the Reich Eco range does not affect suspension & can be fitted to either the front or back of the wheel. A roller is fitted to the Reich mover (which clamps onto the vehicles' chassis). When engaged, the roller turns the wheels & hence is capable of moving your caravan/ trailer in any direction you want it to go.



Some advantages of owning a Reich Eco Mover include:

Softstart & Softstop electronics facilitate precise movement & offer greater control on any ground (millimetre by millimetre) as well as quick & easy hitching & de-hitching of your caravan.

Move your caravan around any corner & to any site effortlessly, by remote control. At the touch of a button, you can singlehandedly move your caravan in any direction.

All parts are zinc-plated & powder coated for complete corrosion resistance. The motors & gearboxes are located inboard, protected from water, dirt and kerbs.

From a loose gravel pitch to a steep grassy slope, it enables your caravan to ascend gradients of up to 25% (for an Eco Single - based on a caravan weight of 1,200 kg) or 15% (for an Eco Twin - based on a caravan weight of 2,000 kg).

450-04540 ECO MOVER - SINGLE

An 'off-road' style Move Control, with a rugged blue metal body. Suitable for single axle caravans/ trailers & comes with a 2year limited warranty.



Specifications

Current Consumption: 15A - 60A (maximum)
Drive: Two 12V DC electric motors, driving friction rollers.
Total Caravan Weight: 2000kg (maximum)
Speed: 1km/ hr (approx)
Weight: 33kg



450-04810 HEAVY DUTY BOLT ON JOCKEY WHEEL DOUBLE CLAMP

Heavy Duty Bolt on DOUBLE Clamp offers superior clamping force over other clamps available in the market. The Universal backing plate allows for easy fitment on 4", 5" or 6" chassis", no need for drilling or welding. Comes complete with bolts.



ARK XO EXTREME OFF ROAD COUPLING

Quick-hitch off road coupling. Suits all 50mm tow balls that comply with Australian Standards AS4177.2 except 50mm tow balls with a flat flange. No more switching hitches!

Choice of 2 ratings

- > 2 tonne for mechanical over-ride brake systems. Part No. 450-04900
- > 3.5 tonne for electric brake systems. Part No. ORXOF50 450-04902
- > Full off road articulation
- > No more switching hitches
- > Quick-hitch locking system
- > Fits 50mm tow balls that comply with Australian Standards AS4177.2 and don't have a flat flange
- > Complies to Australian standards AS4177.3
- > Strong fully cast steel parts

Whether you are looking to improve your off road capability, or just tired of constantly having to switch between an off road hitch and a standard ball hitch, then the Ark Extreme off road Coupling is for you!

450-04900 ARK XO EXTREME OFF ROAD COUPLING 2 TONNE



450-04902 ARK XO EXTREME OFF ROAD COUPLING 3.5 TONNE



SHACKLES

"The current standard applying to shackles is AS 2741-2002, however this standard does not specifically cover the use of rated shackles in an application such as attaching a trailer to a tow bar. This standard covers the use of shackles for lifting purposes.

The Caravan Industry Association of Australia's recommendation is that a shackle meeting the requirements of AS 2741-2002 be used to secure rated safety chains up to 3500kg capacity.

Suitable shackles have the following specifications:

- > Meet the requirements of AS 2741-2002
- > Shackle grade is "S" or "6"
- > Working load limit (WLL) is 1000kg
- > Shackle diameter is 10mm
- > Either "bow" or "dee" shackle design is suitable, although it is noted that the "bow" design provides greater angular displacement

A significant detail to understand is that the breaking load of a shackle is generally six times the working load limit."

Source: RVMAP Technical Alert - D-Shackle Confusion Resolved, 20.10.2014

450-05000 DEE SHACKLE GALVANISED - 8MM (5/16)

Not to be used with safety chains as this is a general purpose shackle.



450-05002
DEE SHACKLE GALVANISED -
8MM (5/16)
RATED TO 0.75T



450-05010
DEE SHACKLE GALVANISED -
10MM (3/8)

With a working load rating of 320kg and a proof load rating of 640kg. Not to be used with safety chains as this is a general purpose shackle.



450-05012
DEE SHACKLE GALVANISED -
10MM (3/8"), RATED TO 1T



450-05020
DEE SHACKLE GALVANISED
- 12MM (3/8")

Dee Shackle Galvanised - 12mm with a working load rating of 520Kg and a proof load rating of 1040Kg. Not to be used with safety chains as this is a general purpose shackle.



450-05022
DEE SHACKLE GALVANISED
- 11MM (7/16"), RATED TO 1.5T



450-05024
DEE SHACKLE GALVANISED
- 13MM (1/2"), RATED TO 2T



HAND BRAKE SPARES

450-05050
HAND BRAKE WIRE CABLE
4mm x 10m length



450-05060
HAND BRAKE CABLE
ADJUSTER
(With Pulley)



450-05070
HAND BRAKE CABLE CLIPS



450-05080
BRAKE CABLE
PULLEY



ALKO COUPLINGS

450-05100
2000KG 2-HOLE SNAP ON
COUPLING (PAINTED)

A fixed coupling suited to fit either where there are no brakes on the trailer, or the braking system does not require activation from an overrun coupling.



450-05110
2000KG 2-HOLE SNAP
ON COUPLING WITH BALL
ADJUSTER

Mounting Hole: 101.6L x 13.5W (mm)
zinc plated surface, ball to first
centre.
Hole: 77mm



450-05120
3500KG ELECTRIC
COUPLING WITH
HAND BRAKE

A zinc plated coupling that is
simple to attach to the tow
ball.



Specifications

Mounting Hole: 182.5L x 55W (mm)
Diameter: 13.5mm

450-05130
2000KG MECHANICAL
OVERRIDE COUPLING
(NO PLATE)

A zinc plated coupling that is suited to 50mm ball types.



Specifications

Mounting Hole: 184L x 54W x 13.5 Diameter (mm)
 Ball to first centre hole: 137mm

450-05140
BRAKE PLATE FOR
MECHANICAL OVERRIDE
COUPLING

Has a painted surface.



Specifications

Mounting Hole: 184L x 54W x 13.5 Diameter (mm)

450-05146
ALKO AKS TOW BALL
RETENTION PLATE

AKS anti-rotation 50mm tow ball plate for lug type tow bar 75mm wide.



450-05147
ALKO AKS HIGH RISE 50MM TOW
BALL

AKS anti-rotation 50mm high rise tow ball (black)



450-05150
HYDRAULIC CONVERSION
WITH 3/4" MASTER
CYLINDER

Converts mechanical couplings to hydraulic couplings (a more reliable braking system), suited for vehicles with a hydraulic drum/brake set up, zinc plated.

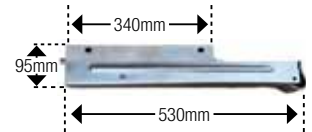


ALKO CORNER STEADIES

Corner steadies are not designed to be used as a jack or as the method of lifting the trailer off the ground. They are designed to stabilize the trailer or caravan when stationary.

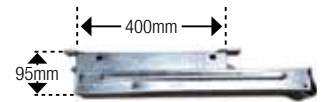
450-05300
500MM CORNER
STEADY

Has a front hex drive & is zinc plated.



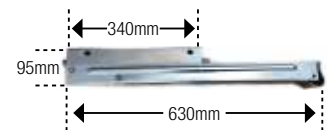
450-05302
500MM CORNER
HEX DRIVE

(Bolt On)



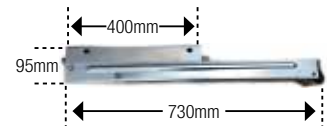
450-05310
600MM CORNER
STEADY

Has a front hex drive & is zinc plated.



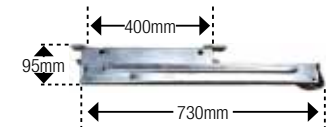
450-05320
700MM CORNER
STEADY

Has a front hex drive & is zinc plated.



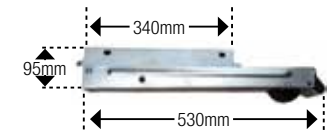
450-05322
700MM CORNER
HEX DRIVE

(Bolt On)



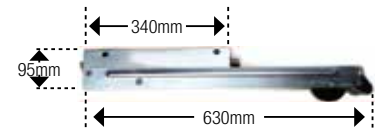
450-05350
500MM CORNER
STEADY

With wheel, has a front hex drive & is zinc plated.



450-05360
600MM CORNER
STEADY

With wheel, has a front hex drive & is zinc plated.



450-05410
ALKO CORNER
STEADY 510MM

Has a hex drive, comes complete with a bigfoot making it ideal for softer ground and is zinc plated. (370mm closed)



450-05400
590MM DROP DOWN
CORNER STEADY

Has a hex drive, comes complete with a bigfoot making it ideal for softer ground & is zinc plated. 450mm closed



450-05450
740MM DROP DOWN
CORNER STEADY

Has a hex drive, comes complete with a bigfoot making it ideal for softer ground & is zinc plated. 530mm closed



450-05460
REPLACEMENT HANDLE
TO SUIT ALKO CORNER
STEADIES



NYLON BUSHES FOR SPRINGS

450-05500
ALKO SPRING NYLON BUSH
- 1/2" X 7/8" X 45MM



450-05510
ALKO SPRING NYLON BUSH
- 9/16" X 7/8" X 45MM



450-05530
ALKO SPRING NYLON BUSH
- 9/16" X 3/4" X 45MM



450-05540
ALKO SPRING NYLON BUSH
- 5/8" X 7/6" X 60MM



SHACKLE PINS & NUTS

450-05630
ALKO SHACKLE PIN
- 9/16" X 3-1/2"

Comes with Nyloc Nut (Non Grease-able)



450-05640
ALKO SHACKLE PIN
- 9/16" X 3-1/2"

Long (Grease-able)



450-05660
ALKO SHACKLE PIN
- 5/8" X 3-1/4"

Long (Non Grease-able)



450-05730
ALKO SHACKLE PIN NYLOC NUT
5/8" UNF

(Unified National Fine is a thread form with a 60 degree flank angle rounded roots and flat crests)

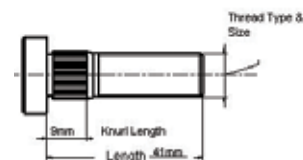


450-05740
ALKO SHACKLE PIN NYLOC NUT
9/16" UNF

(Unified National Fine is a thread form with a 60 degree flank angle rounded roots and flat crests)



450-05800
ALKO WHEEL STUD
KNURLED 1/2"
UNF X 41MM



450-05850
ALKO WHEEL NUT 1/2" UNF
(Nut Angle 60 Degrees) - 20.5mm diameter



TOWSAFE TOW BALL WEIGHT SCALES

450-05990 TOWSAFE TOW BALL WEIGHT SCALE

Avoid unnecessary fines or even worse-accidents-by knowing your tow ball weight before you head out on a trip. Why do you need to know your tow ball weight? To put it simply, it is unsafe. Too much weight on your tow ball can cause excessive trailer sway, diminished handling and decreased braking ability. Not to mention it can be costly. The laws vary between states but on-the-spot fines can be issued if you exceed your RVs and your vehicles' tow ball weights. The TowSAFE Scale is compact and easy to store. It is made from heavy-duty metal but is gentle on your RV's coupling thanks to a soft rubber head. The gauge is easy to read and will handle up to 350kg. It has also been tested to Australian Standards (AS/NZS ISO10012:2004) so you know you're getting a quality product.



450-05996 TOW LOAD INDICATOR

An easy to read, integrated scale that allows you to pack your caravan or trailer and check the weight as you go. Made in Australia, the Tow Load Indicator simply screws onto your existing hitch, allowing you to check that you're staying within safe towing regulation. Comes with a 10 year manufacturer's warranty.



Specifications
Gauge Display: 50 - 400kg

REICH CARAVAN WEIGHT CONTROLS

Caravan Weight Control provides you with complete control over the total weight and the partial loads on the individual wheels. The handy scale will help you prevent overloading as well as loading unevenly which will negatively affect driving behavior. Caravan Weight Control works reliably and precisely and is suitable for cars, delivery vehicles, motorhomes, caravans and trailers.

Three measuring programs for:

1. Caravan with one axle and support wheel
2. Caravan with tandem axle and support wheel
3. Motorhome

450-05910 REICH CARAVAN WEIGHT CONTROL YELLOW 1000KG

Specifications
Max. load per wheel: 1,000 kg (yellow)
Deviation: < 3 %
Temperature range: 0 to 50°C
Batteries: 3 x 1.5 V Alkaline Type AAA
Dimensions: 360 x 70 x 45 mm



450-05910 REICH CARAVAN WEIGHT CONTROL ORANGE 1000KG

Specifications
Max. load per wheel: 1,500 kg (orange)
Deviation: < 3 %
Temperature range: 0 to 50°C
Batteries: 3 x 1.5 V Alkaline Type AAA
Dimensions: 360 x 70 x 45 mm





A leading supplier to the RV market, offering a comprehensive range of remote caravan movers and one of the largest and most varied caravan security and safety product ranges in Australia. As a design-led company, Purple Line specialises in manufacturing innovative and affordable product solutions based on the needs of the market.

450-06002
KOJACK 4T JACK KIT (NEW)
HIGHER EXTENSION

The ideal caravan jack that is able to lift a huge 4tons almost effortlessly. Its 3-piece jack handle ensures a smooth hydraulic action. The Kojack mounts under the caravan chassis, so there's no need to dismantle jockey wheels, and its compatible with both ball and block fittings to match most Australian caravans such as Goldstream, Elite and Jayco. Each kit includes: x1 4ton hydraulic Kojack, x1 ball fitting, x1 block fitting, x1 100mm extension, x1 Allen key, x1 3-piece jack handle, x1 fitted carry case and attachment collars.

Specifications

Weight: 12kg

Lift Range: 220mm (more if extension pieces are used)



450-06010
KOJACK BASEPLATE

Kojack® Baseplate adds stability: If you have a Purple Line® Kojack® 4 tonne caravan jack and want to make it even more stable and secure, the new Kojack® Baseplate is the answer. Ideal for soft ground, gravel or sand, Baseplate gives you a footprint three times the size of the Kojack® itself, which means three times the stability and a third of the downward pressure. It clips onto the Kojack® easily and securely and can also double as a secure footing for your jockey wheel.

Features

- > Can be used under jockey wheels to keep them in place and stop them from sinking
- > Spring loaded latch keeps the jack in place
- > Solid metal construction
- > The ideal upgrade for kojack jack
- > Suitable for most terrain including: sand, mud, grass, bitumen and gravel
- > Australian designed and developed
- > 2 Year warranty



450-06032 PURPLELINE TORPEDO HITCH PIN LOCK

Add extra security to your vehicle

- > Towing rating 3500kg
- > Resistant to cutting, drilling & gas freezing
- > Suits class 4 receiver up to 75mm
- > Compliant with Australian Standards: 4177.1-2004



450-06040 SOCKET EXTENSION

An extender socket great for use on corner steady legs and the Kojack Leveller (to stabilise, raise or lower an RV). It can also be used to tighten or loosen other bolts and nuts provided they are 19mm in size. Made from high tensile steel and designed for use with a torque sensitive rechargeable drill.



450-06050 SOCKET EXTENSION WITH UNIVERSAL JOINT

Similar to the Socket

Extension (above) except that it has a universal joint to facilitate tight spots. It can also be used to tighten or loosen bolts and nuts of 19mm, and is also made from high tensile steel.



450-06064 NEMESIS WHEEL CLAMP

The Nemesis wheel lock is made from specially hardened high tensile steel which is resistant to cutting and drilling and incorporates an exclusive high security 9-lever barrel lock, resistant to picking drilling and gas freezing. The lock is made by Lowe and Fletcher (UK). It is supplied with a handy carry bag to store the unit when not in use. Built with composite metals, resistant to cutting, drilling and gas freezing. Incorporating a seven-pin anti-pick and anti-drill locking bolt with a tubular anti-copy key. Strong, secure and tough, it remains quick and easy to fit.



Suitable for steel and alloy wheels. New Model, 'one size fits all' - suitable for on and off road wheels up 17" and tyres up to 275mm cross-section. Now comes with three keys. The Nemesis wheel lock is the perfect highly visible deterrent.

Ideal for

- > Cars
- > Large Off-Road Tyres
- > Some light commercial vehicles (check wheel/Tyre combinations)
- > Motorhomes
- > Caravans
- > Camper Trailers
- > Boat trailers
- > Horse floats
- > General trailers
- > The Purpleline Nemesis comes with a 2 year warranty.

450-06059 KOJACK 150MM EXTENSION PIECE



450-06072 PURPLELINE ANTI THEFT PACK

Complete Security Kit keeps you safe: Purple Line® has made it a whole lot easier to guard your caravan against thieves with its new Complete Security Kit, which combines the tough Samurai wheel clamp and Saracen® hitch lock in one compact, easy-to-use kit. Keyed alike for maximum convenience, both units have Purple Line's tough, 7-pin locking mechanism, as also used in the big Nemesis® wheel clamp and the hitched-and-unhitched Saracen® Ultra hitch lock. All in a convenient carry bag and backed by a 2 year warranty.



Features

Samurai Wheel Clamp

- > Simple to use, compact and quick fit
- > Fits tyre widths 145 to 275mm
- > Suitable for both on and off road wheels
- > 2 Year warranty

Saracen Hitch Lock

- > High security hitch lock
- > Quick and easy to fit
- > Resistant to cutting, picking, drilling and gas freezing
- > Made from high strength composite materials
- > 2 Year warranty

450-06081 SARACEN AUSTRALIAN HITCH LOCK

Made from especially hardened, high tensile steel, the Saracen is a high security hitch lock that is resistant to cutting and drilling. It is a quick and easy to fit solution to prevent your RV from being towed away. Featuring a Lowe and Fletcher lock, which is also resistant to picking and freezing, the Saracen comes with two keys and is suitable for use on most Australian caravan coupling hitches. Comes with a one year manufacturer's warranty.



Compatible with the following hitches: Alko, Trigg Boss, Meher, Trojan and some other standard Australian hitches.

450-06085 GULLWING EURO HITCH LOCK

Designed to fit Alko stabilizer hitches AKS2004 and AKS3004, found predominantly on European RVs such as Bailey, Swift and Adria. It is highly secure, easy to fit and takes a couple of minutes to install. The Gullwing can be fitted to a van whether it is hitched or not.



450-06090 AEROPLUS CARAVAN WIND DEFLECTOR

Proven to reduce drag, the Aeroplus improves towing stability by directing airflow over your RV. This in turn, helps to minimize wear and tear to your tow vehicle whether it be mechanical or your tyres. It is made from ABS plastic and fits most 4WDs, SUVs and station wagons. The Aeroplus is easily fitted onto an existing horizontal roof rail by means of two clamps which are tightened by hand. As you drive, it directs the air over the top of your RV and thus reduces drag and improves fuel economy. It is suitable for use on most roof rails such as Rola, Rhino and Thule (providing that the rail is not wider than 80mm). Comes with angled spacers to increase the angle of the Aeroplus and a two year manufacturer's warranty.



450-06086 SARACEN ULTRA HITCH LOCK

The Saracen Ultra hitch lock suits Australian standard 50mm ball hitches and fits both when HITCHED and UNHITCHED.



Saracen Ultra suits any trailer with a standard 50mm ball hitch - boat and work trailers, caravans and camper trailers, horse floats, box trailers, car and motorcycle trailers - any trailer at all.

Features

- > Made from specially hardened high strength steel
- > Resistant to cutting and drilling
- > Incorporates a high-security, 7-pin barrel lock, resistant to picking, drilling and gas freezing.
- > Suits Australian standard 50mm ball hitches
- > Fits both when HITCHED and UNHITCHED.

Specifications

Weight: 7kg (including packaging and fittings)
3.5kg (ABS plastic tail only)
Dimensions: 135W x 20H (cm)

Note: The Aeroplus has been wind tunnel tested up to a speed of 60mph (96kmph). It is therefore advised that if travelling whilst the Aeroplus is fitted, 96kmph is not exceeded. Drivers should always adhere to the road rules of the state they are travelling in.

450-06088 SARACEN OFF ROAD HITCH LOCK

Today's tough Aussie off-road vans are increasingly fitted with the Vehicle Components Hitchmaster® D035 articulated hitch, and now Purple Line® has developed a tough new hitch lock to protect it. The new Saracen® Off-Road hitch lock provides the same combination of toughness and easy fitting for the D035 as the standard Saracen® models do for standard 50mm ball hitches. As with all Purple Line® anti-theft products, it features tough metal construction, engineered to give maximum protection for Aussie caravanners. It comes with Purple Line's tough, 7-pin locking mechanism, and is fitted simply by placing the backing plate in position, clamping over the cover and locking the stout locking pin. Backed by a 2 year warranty, it is as tough as the tough Aussie vans it protects - and it makes life even tougher for would-be thieves.



It has all the proven Saracen features including

- > High strength steel construction
- > Anti-pick seven-pin cylinder lock
- > Anti-copy tubular key
- > Suits V1, V2 & V3 D035

450-06400 MILENCO INTERNAL UNIVERSAL SILVER THERMAL CAB BLIND

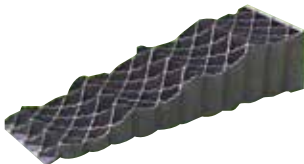
This one-size-fits-all blind features high quality, black sucker pads with their own handles to stop any distracting light through for you to get a good night sleep! For optimum performance in winter conditions, warm up demister before removing.



450-08002 MILENCO QUATTRO LEVEL PAIR (160MM MAX LIFT)

Sold in pairs complete with carry case.

Europe's best-selling large Level lifts to 160mm and incorporates a lattice, high-grip upper tread surface. It pockets the wheel at every height and features a solid base to stop sinking on soft terrain. The high grip leading edge prevents slippage when approaching and avoids the need for gripper plates.



Specifications

Dimensions: 20cm H x 24.5cm W x 81cm L

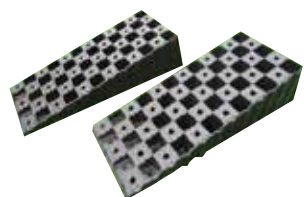
Height of Each Step: 4cm/8cm/12cm/18cm

Weight: 3.8kg Per Level

Capacity: 1500kg Per Wheel = 6000kg Motorhome or 3000kg Caravan

450-08006 MILENCO MGI WEDGE LEVELS (TWIN PACK)

A conventional wedge-shaped Level with 50% Base and 50% Top surface area featuring a lightweight, strong construction. The high grip leading edge removes the need for gripper plates. Compatible with MGI Milenco Wedge Level Chock.



Specifications

Dimensions (approx): 11cm H x 18cm W x 46cm L

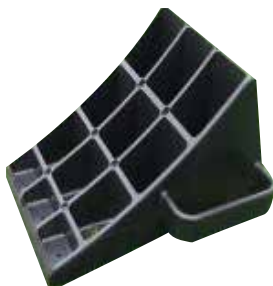
Height of Each Step: 4cm/8cm/12cm/18cm

Weight: 1kg Per Level

Capacity: 1000kg Per Wheel = 4000kg Motorhome or 2000kg Caravan

450-08008 MILENCO MGI WEDGE LEVEL CHOCK

An extra wide chock with side handles to reduce the risk of hand trap. Compatible with MGI Milenco Wedge Levels. Available singularly.



450-08010 MILENCO MGI WEDGE LEVEL WITH CHOCK

A pack consisting of 1x MGI Wedge Level (450-08006) and 1x MGI Chock (450-08008).



450-08020 MILENCO STACKA TYRE SAVER (TWIN PACK)

These heavy duty tyre savers feature a durable design and a solid base to prevent sinking on soft terrain. Suitable for twin axle, single axle, and tag axle.



Specifications

Capacity: 1500kg Per Wheel = 6000kg Motorhome or 3000kg Caravan

450-08022 MILENCO GIANT LATTICE TREAD GRIP MAT (TWIN PACK)

This heavy-duty, extra large set of Grip Mats is designed to provide excellent performance in wet conditions. The Lattice design allows them to be linked together without being tied.



Specifications

Dimensions Per Mat: 106cm L x 33cm W

STONE SHIELDS



Protect your RV, and prolong the life of its paintwork, by installing a Stone Shield. Supplied as a flat pack, it is quick and easy to install of the A-frame of your caravan or camper trailer. Made from tough rip stop mesh (resistant to rips or tears), the Stone Shield stops stones (and other hard debris) from chipping, or potentially even denting your RVs paintwork. Comes with two extra-large rubber mud flaps to protect the undercarriage of your caravan or camper trailer.

450-06500
CARAVAN STONE SHIELD

Specifications
Dimensions: 2310mm x 500mm
Net Weight: 16.0kg



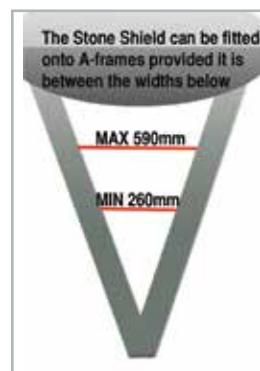
450-06520
CAMPER TRAILER STONE SHIELD

Specifications
Dimensions: 1800mm x 500mm
Net Weight: 14.8kg



450-06510
CAMPER VAN STONE SHIELD

Specifications
Dimensions: 2150mm x 500mm
Net Weight: 15.7kg



450-06613
STONE SHIELD
RUBBER MUD FLAPS
X2 #9 T/S TRAILER



450-06608
STONE SHIELD
RUBBER MUD FLAPS
X2 #9 T/S BOTH
CARAVAN & CAMPER



450-06614
STONE SHIELD RIP
STOP MESH #10 T/S
TRAILER



450-06611
STONE SHIELD RIP
STOP MESH #10 T/S
CAMPER



450-06609
STONE SHIELD RIP STOP
MESH #10 T/S CARAVAN



500-99994
RETRO REFLECTOR

