

SECTION 4

ELECTRICAL EQUIPMENT

(Product Group - 500)

Fans and Smoke Alarms	148
Battery Supplies	149 - 150
Narva Electrical Fittings	162 - 165
Power Inlets and Outlets	166 - 169, 172
Power Points & Switches	166 - 172
Electrical Leads	169 - 171
CMS Equipment	170 - 172
15amp-10amp Adaptors	172 - 173
NARVA Accessory Sockets	174
Solar Panels	175 - 176
Tyre Inflators (Air Compressors)	176 - 177
Trailer Plugs and Sockets	177 - 179
Cable Ties	179
Caframo Fans	180 - 181
Briggs and Stratton Generators	182 - 183
Pressure Cleaners	184

LIGHTING EQUIPMENT

(Product Group - 500)

Lights and Lenses	151 - 153
Truck and Trailer Lighting	153 - 157
Led Bulbs	157 - 158
Reflectors	159
Sphere™ Wireless Lighting	160 - 161

GAS EQUIPMENT

(Product Group - 550)

Gas Regulators and Hoses	185 - 187
Gas Unions, Nuts and Valves	187 - 189
Gas Cylinders and Cradles	189 - 190
Gas Detector	190



500-00060 FANTASTIC ENDLESS BREEZE FAN

Great for use in your horse trailer or RV, the Endless Breeze fan provides instant airflow when needed. Its fan has 3 speed settings allowing you to set the airflow at a comfortable rate while operating quietly. Operates on 12V only (comes with the plug & cord) & has a 12" 10-blade fan.



Specifications

Dimensions: 362H x 343W x 92D (mm)
Weight: 2.27kg

500-00082 FAN AND LIGHT COMBO (WHITE)

Suitable for use in Jayco Campers and Expandas, this reading light has a 2-speed fan. It has a 1/4" (6.4mm) jack which allows it to fit into an existing 12V internal light (such as 500-05004, 500-05005, 500-05006 and 500-05007). There are also two plastic U-brackets on the rear/top that will clip onto a 3/4" - 1" (19.1mm - 25.4mm) camper support pole. Alternatively, it can be hung using the single U-bracket at the back to hang it vertically. Made in the USA to Australian and NZ standards, it also features a curly cord that extends up to 8ft (2.4m) and comes with a globe*.



* You can replace this globe with a Coast LED, either 500-05758 or 500-05760 will fit.

Specifications

Power: 12VDC, 1.3A (max)
Dimensions: 250L x 145W (mm)

500-00200 SAFETY HUSH SMOKE ALARM

Ideal for fast flaming fires, the Hush Smoke Alarm is easy to install with no wiring necessary. It has a feature that enables the alarm to be switched off for 10 minutes in case of false alarms. It also has an ionisation sensing chamber which automatically resets once the smoke is cleared. This smoke alarm comes with a 9V battery which lasts approximately nine months. A warning signal will sound when the battery is running low.



500-00730 SETEC DRIFTER

The Setec Drifter is an LCD display unit with the capacity to monitor up to four water tanks and a 12V battery. This means that you'll know when you're running low on fresh water or when your waste tank needs to be emptied (if you choose this as an option to monitor), all whilst observing your battery's status (current going in and out). It is compatible with any 12V lead acid battery, including VRLA, AGM, Gel and even the traditional non-sealed batteries.



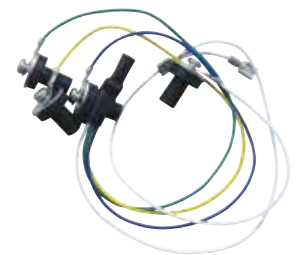
The Drifter allows you to control your battery and water pump via a switch on the LCD display. It features all the handy gadgets like a clock and ambient temperature display. If that wasn't enough, it can be used as a nightlight and even has a built in USB charger for low powered devices such as iPods, mobile phones and MP3 players.

Specifications

DC Power Input: 8-15V DC, 0.7-0.35A
USB Output: 5V DC at 0.9A C-Tick Approved
Complies with IEC 61010-1, ED: 2001, CISPR 11:2009
Dimensions: 149L x 85H x 22W (mm)
Weight: 0.21kg

500-00749 SETEC DRIFTER WATER SENSOR TANK SET

The Setec Drifter, part number 500-00730 (above) comes with wiring for up to two tanks. You could choose to utilize this to monitor two water tanks or, one water tank and one waste tank. Should you want to monitor extra tanks, a Water Sensor Tank Set must be purchased (one set per tank).



SPHERE AGM BATTERIES

Sphere 12V Valve Regulated AGM Rechargeable Batteries are available in two models to suit most needs. Ideal for use in caravanning and camping, the AGM design offers improved discharge and recharge efficiencies. They require less maintenance, are spill proof and are safer for you and the environment compared to conventional alternatives.

**500-00820
SPHERE 12V 100AH
VALVE REGULATED AGM
RECHARGEABLE BATTERY**



Specifications
Internal resistance: Fully Charged at 25°C: 4.9 Ohm
Max. Discharge Current: 1200A(5s)
Operating Temperature
Discharge: -15 ~50°C
Charge: 0 ~40°C
Storage: -15 ~40°C
Charge Method (25°C)
Max. Charge current: 40
Cycle use: 14.4-15.0v(-30mv/ °c)
Float use: 13.5-13.8v(-20mv/ °c)
Self Discharge: 3% of capacity declined per month at 20°C
Dimensions: 307L x 168W x 214H (mm)

**500-00822
SPHERE 12V 120AH
VALVE REGULATED AGM
RECHARGEABLE BATTERY**



Specifications
Internal resistance: Fully Charged at 25°C: 4.9 Ohm
Max. Discharge Current: 1200A(5s)
Operating Temperature
Discharge: -15 ~50°C
Charge: 0 ~40°C
Storage: -15 ~40°C
Charge Method (25°C)
Max. Charge current: 40
Cycle use: 14.4-15.0v(-30mv/ °c)
Float use: 13.5-13.8v(-20mv/ °c)
Self Discharge: 3% of capacity declined per month at 20°C
Dimensions: 330L x 171W x 219H (mm)

LION DEEP CYCLE BATTERIES

The Lion AGM (Absorbed Glass Mat) range of batteries feature a fully sealed design with active electrolytes held between plates in an absorbed state. This gives the battery enhanced discharge and recharge efficiency, high resistance against vibrations and leaks, non-gassing benefits for safety and flexible installation. Ideal for Dual Purpose starting and Deep Cycle requirements in 4WD, caravanning, camping and boating. Comes with a 12month manufacturer's warranty.

**500-00790
LION 12V 100AH AGM
DEEP CYCLE BATTERY**



Specifications
Dimensions: 305L x 168W x 208H (mm)
Weight: 28.4kg
Amp Hour: 100 (at 20hr rate)

**500-00792
LION 12V 120AH AGM
DEEP CYCLE BATTERY**



Specifications
Dimensions: 329L x 173W x 209H (mm)
Weight: 32.8kg
Amp Hour: 120 (at 20hr rate)
CCA: 575 (at -180C)

CAMCO BATTERY BOX

**500-02032
CAMCO BATTERY
BOX - SMALL**

Camco RV Standard Battery Box is a black, lightweight, heavy-duty corrosion-resistant polypropylene box which is designed to secure and protect batteries. It includes a lift-off lid, durable woven hold-down strap, foot clamps and stainless steel screws.



- > Includes lift-off lid, durable woven hold-down strap, foot clamps and stainless steel screws
- > Lightweight, heavy-duty corrosion-resistant polypropylene box
- > It has internal dimensions of 273L x 184D x 200H (mm) with 50mm additional head room for battery terminals.

**500-02034
CAMCO BATTERY
BOX - LARGE**

Camco RV Large Battery Box is a black, lightweight, heavy-duty corrosion-resistant polypropylene box which is designed to secure and protect batteries. It includes a lift-off lid, durable woven hold-down strap, foot clamps and stainless steel screws.



- > Includes lift-off lid, durable woven hold-down strap, foot clamps and stainless steel screws
- > Lightweight, heavy-duty corrosion-resistant polypropylene box
- > It has internal dimensions of 336L x 184D x 219H (mm) with 50mm additional head room for battery terminals.

500-02036
CAMCO
REPLACEMENT
BATTERY BOX STRAP
& HARDWARE

Camco's Replacement Strap for Battery Box measures 990mm long x 38mm wide. It is made of woven polypropylene and includes the hardware to attach it to the battery box.



- > 990mm long x 38mm wide
- > Includes hardware to attach to battery box
- > Made of woven polypropylene
- > Heavy-duty and durable
- > Easy to install

500-02038
CAMCO STANDARD
BATTERY TRAY
- PLASTIC

It is heavy-duty acid-resistant plastic with stainless steel hardware



- > Heavy-duty acid-resistant plastic
- > Stainless steel hardware

500-02040
CAMCO LARGE
BATTERY TRAY -
PLASTIC

It is heavy-duty acid-resistant plastic with stainless steel hardware.



- > Heavy-duty acid-resistant plastic
- > Stainless steel hardware

ANBI SWITCH BATTERY ISOLATOR

The ANBI Battery Switch eliminates drainage of stored power by isolating the battery from power-hungry components like clocks, and general energy leakage. Installation is quick and easy and can be completed in less than 15 minutes.

Even when your ignition key is off, there are still components that draw current and continue to drain your battery. That's why it's common to find it flat when you go to start a vehicle, like a caravan, classic car, or ride-on mower after it's sitting for an extended period of time. This is both inconvenient and costly as a completely flat dead battery can often become damaged if left uncharged for an extended period.

ANBI also provides a theft deterrent by virtually immobilising the vehicle when activated. This can result in significant savings on insurance premiums. Make sure your steed is ready to go when you are, install an ANBI Battery Switch today!

500-02120
ANBI SWITCH - BATTERY
ISOLATOR

The ANBI Switch is a simple, high quality, robust solution to help you avoid flat batteries.

- > 5 Year Warranty
- > Simple installation
- > Suitable for wide range of applications
- > Proven anti-corrosive. Exceeds international standards for salt and sea spray.
- > Accelerated life tested for proven durability
- > Designed and manufactured in Australia



500-02121
ANBI SWITCH CARAVAN &
CAMPERTRAILER
- BATTERY ISOLATOR

Nothing's more frustrating than going to hitch-up your caravan or camper only to discover that you've fallen foul of a flat battery! Now you can avoid disappointment and inconvenience, with an inexpensive and simple to install ANBI Battery Switch. The ANBI Battery Switch eliminates drainage of stored power, by isolating the battery from energy leakage. Installation is quick and easy and can be completed in less than 15mins. Make sure you're always ready to go and install an ANBI Battery Switch today!



Specifications

Vibration tested to Australian Standard
 1200A at 12V for 5ms
 600A at 24V for 5ms
 120A at 12V continuous load max
 60A at 24V continuous load max

500-02124
ANBI SWITCH - EXTENSION KIT

Allows the user to fit the ANBI Switch more remotely, out of sight if needed or to avoid a tight space.



EXTERNAL LIGHTING

500-01014
BARGMAN LIGHT
REPLACEMENT LENS
ONLY



500-01030
HALOGEN PORCH
LIGHT WITH SWITCH
 Porch light c/w switch white
 base - clear lens 12V



500-01033
LENS ONLY TO SUIT
CURRENT PORCH
LIGHT (CLEAR)



500-01036
LED ANNEX LIGHT
 Has a white base that mounts
 onto your RV wall (comes with
 screws for installation). Also
 has a clear lens.
 Note: This is an interior LED
 light. It can be used on the
 exterior provided it is sealed.



500-01038
ANNEX LIGHT WITH
SWITCH - BLACK



500-01050
COAST LIGHT WITH
GRAB HANDLE
 Comes in white to compliment
 your RV's exterior. Made from
 UV stabilised plastic, it is
 lightweight & is supplied with
 a 10W globe.



500-01051
LENS FOR COAST
LIGHT WITH GRAB
HANDLE



500-01055
REPLACEMENT
SWITCH, LOCKING
RING + BUTTON
COVER T/S
XC9HANDLE03/
C4323B. C4235



500-01057
GRAB HANDLE
WITH LED
 Featuring a simple and
 modern design, the latest
 Coast Grab Handle sheds light
 around your RV entry area.
 Turn it on or off (as required)
 using the trigger switch
 found on the underside of the
 handle. Comes with a five year
 manufacturer's warranty.



Specifications
Dimensions: 175H x 149W x 50D (mm)
Voltage: 10 - 36V
Material: Polycarbonate

500-01059
GRAB HANDLE WITH
LIGHT - BLACK



COAST LED ASSIST HANDLES

Available in 3 colours - Black, White and Chrome, Coast to Coast LED Assist Handles offer practical convenience, stylish modern design and the following great features:

- > LED mode touch switch conveniently located behind the handle
- > IP65 water resistance, built for outdoor use
- > Natural white LED illumination
- > Blue LED courtesy light

Specifications

Voltage: 12V

White Power Draw: 2W

Blue Power Draw: 0.8W

Light Operation: White - Blue - Off

IP Rating: IP65

Carton Quantity: 23

500-01062 ASSIST HANDLE W/ 12V LED LIGHT BLACK ABS



500-01064 ASSIST HANDLE W/ 12V LED LIGHT WHITE ABS



500-01066 ASSIST HANDLE W/ 12V LED LIGHT CHROME ABS



COAST LED AWNING LIGHTS

Great for lighting up your awning area, the Coast LED Awning Lights are waterproof, and easily installed onto your RV by means of two screws. Featuring a pure white light, it runs on 12V DC and is available in two sizes.

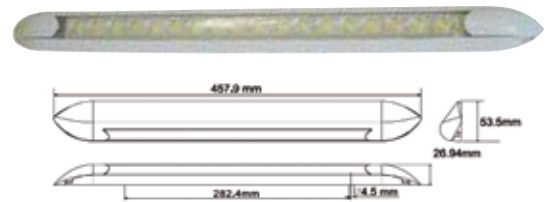
500-01250 COAST LED AWNING LIGHT PURE WHITE (20CM)

Contains 9 LEDs



500-01252 COAST LED AWNING LIGHT PURE WHITE (40CM)

Contains 18 LEDs



500-01268 LED INTERNAL ROOF LIGHT.53R TOUCH WARM WHITE



Specifications

Length: 158.5 mm

Width: 118.5 mm

Total Height: 16.5 mm

500-01270 LED INTERNAL ROOF LIGHT.53R TOUCH WARM WHITE



Specifications

Length: 236.5 mm

Width: 126.5 mm

Total Height: 16.5 mm

LED OVAL LIGHTS

500-01260
COAST LED OVAL LIGHT 12V WITH JACK



500-01262
COAST LED OVAL LIGHT 12V



500-01264
COAST LED OVAL LIGHT 12V DUAL



500-01266
COAST LED OVAL LIGHT 12V DUAL WITH JACK



OYSTER LENSES

500-01350
OYSTER LENS ONLY SHALLOW GLASS 8" (200MM)



500-01352
OYSTER LENS ONLY DEEP GLASS 8" (200MM)



500-01360
OYSTER LENS ONLY DEEP 10" (250MM)



12V INTERNAL LIGHTS

500-05000
WHITE INTERIOR DOME LIGHT WITH ON/ OFF ROCKER SWITCH



Specifications
Dimensions (mm): 190W x 109H x 50D

500-05001
SILVER INTERIOR DOME LIGHT WITH ON/ OFF ROCKER SWITCH



500-05002
WHITE DUAL INTERIOR DOME LIGHT WITH ON/ OFF ROCKER SWITCH



Specifications
Dimensions (mm): 280W x 109H x 50D

500-05010
LENS TO SUIT INTERIOR DOME LIGHTS (BOTH DUAL AND SINGLE INTERIOR LIGHTS)



NARVA L.E.D LIGHTS

500-05020
LED SIDE MARKER LAMP RED/AMBER LED CHROME BASE



Specifications
Dimensions (mm): 74 x 38

500-05022
LED SIDE MARKER LAMP RED/AMBER WITH WHITE BASE



Specifications
Dimensions (mm): 74 x 38

500-05024
LED FRONT END OUTLINE MARKER LAMP WHITE WITH CHROME BASE



Specifications
Dimensions (mm): 74 x 38

500-05026
LED FRONT END OUTLINE MARKER LAMP WHITE WITH WHITE BASE



Specifications
Dimensions (mm): 74 x 38

500-05028
LED FRONT END OUTLINE
MARKER OR EXTERNAL
CABIN LAMP AMBER
WITH CHROME BASE



Specifications
 Dimensions (mm): 74 x 38

500-05030
LED FRONT END OUTLINE
MARKER OR EXTERNAL
CABIN LAMP AMBER
WITH WHITE BASE



Specifications
 Dimensions (mm): 74 x 38

500-05032
LED REAR END OUTLINE
MARKER LAMP RED WITH
CHROME BASE

0.5m of cable is provided. 9 - 33V



Specifications
 Dimensions (mm): 74 x 38

500-05034
LED REAR END OUTLINE
MARKER LAMP RED WITH
WHITE BASE



Specifications
 Dimensions (mm): 74 x 38

500-05036
LED SIDE DIRECTION
INDICATOR LAMP AMBER
WITH CHROME BASE

0.5m of cable is provided. 9 - 33V



Specifications
 Dimensions (mm): 74 x 38

500-05040
LED LICENCE PLATE LAMP
BLACK HOUSING



Specifications
 Dimensions (mm): 95 x 60

500-05042
LENS TO SUIT SIDE MARKER
LAMP



Specifications
 Dimensions (mm): 114 x 58

500-05050
LED SEALED EXTERNAL
CABIN LAMP (AMBER)

Comes with a grey mounting base. These LED's feature virtually unbreakable polycarbonate lenses.



Specifications
 Draw: 0.05A at 12V
 Dimensions (mm): 100 x 30

500-05085
POD MULTI LIGHT
TWIN PACK

Compact, portable and versatile, the Reese® POD twin pack is the perfect companion for your next trip. From the bright LED wide beam light located on the top, projecting up to 400 metres; to the 360-degree red warning LED, to the multi-purpose mounting system, the POD is levels above your standard work light or torch. The heavy-duty and weather resistant casing ensures that your POD will last in the harsh Australian terrain whilst the compact, low profile design will let you illuminate those hard to reach areas.



The Reese POD twin pack is the ultimate LED lighting system, ideal for garage, trailer, caravan or boat.

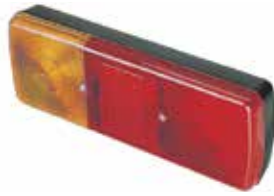
- > Multipurpose Patented REESE® PAD allows mounting magnetically, to hang with an incorporated hook, fixed mount (with screw or velcro strip) or angle mount.
- > 7 RED flashing safety modes to alert others if a hazard or your location; with up to 15 hours in S.O.S. mode
- > 2 WORK LIGHT modes (High Beam and Low Beam) with up to 3 hours on High Beam mode.
- > 140-degree wide beam for extended coverage and maximum lighting
- > 360-degree light projection and visibility of up to 400 metres
- > Compact and low profile for hard to reach places
- > Heavy-duty ABS plastic protects the POD from knocks and bumps.
- > Weather resistant construction keeps it functional in the wet or dust

Pack includes 2 x POD. Each POD requires 3 x AAA batteries.

NARVA LAMPS & REFLECTORS

500-05100
REAR COMBO LIGHT
**- STOP/PARK/
 DIRECTION**
INDICATOR

With shallow body.



Specifications
 Dimensions (mm): 275 x 93

500-05102
HEAVY DUTY REAR
COMBO LAMP
- STOP/DIRECTION
INDICATOR

With grey base.



Specifications
 Dimensions (mm): 405 x 130

500-05104
HEAVY DUTY REAR
COMBO LAMP
**- STOP/PARK/
 REVERSE/DIRECTION**
INDICATOR



Specifications
 Dimensions (mm): 650 x 132

500-05110
SIDE MARKER LAMP
- RED/AMBER



Specifications
 Dimensions (mm): 120 x 65

500-05112
CLEAR FRONT END
OUTLINE MARKER
LAMP WITH BUILT IN
REFLECTOR



Specifications
 Dimensions (mm): 85 x 38

500-05114
CLEAR FRONT END
OUTLINE MARKER LAMP
**WITH RUBBER BOOT &
 BUILT IN REFLECTOR**



Specifications
 Dimensions (mm): 97 x 48

500-05120
NARVA SIDE DIRECTION
INDICATOR LAMP
(AMBER)



Specifications
 Dimensions (mm): 120 x 52

500-05015
NARVA LED BLACK
AWNING LIGHT



500-05119
NARVA LARGE BASE LED
AWNING LIGHT



500-05123
NARVA LED AWNING
LIGHT

A low profile LED lamp that is great for positioning underneath an awning canopy on RVs. It has a classic shape with a white base (9-30VDC, 3W).



Specifications
 Dimensions (mm): 250W x 87H x 17-35D

500-05124
NARVA FRONT END
**OUTLINE MARKER &
 FRONT POSITION LAMP**
(CLEAR)



Specifications
 Dimensions (mm): 120 x 52

500-05125
NARVA REAR END
OUTLINE MARKER & REAR
POSITION LAMP RED

Can use 12V or 24V globes. ADR approved.



Specifications
 Dimensions (mm): 120 x 52

500-05126
CLEAR LENS TO SUIT
FRONT END LAMP



Specifications
 Dimensions (mm): 120 x 52

FESTOON GLOBES

500-05150
12V 3W GLOBE
 10 pack.



Specifications
 Dimensions (mm): 8 x 28

500-05152
12V 5W GLOBE
 10 pack.



Specifications
 Dimensions (mm): 11 x 36

500-05154
12V 5W GLOBE
 10 pack.



Specifications
 Dimensions (mm): 11 x 41

500-05156
12V 10W GLOBE
 10 pack.



Specifications
 Dimensions (mm): 11 x 36

500-05162
12V 18W GLOBE
 10 pack.



Specifications
 Dimensions (mm): 15 x 41

500-05164
12V 18W GLOBE
 10 pack.



Specifications
 Dimensions (mm): 15 x 44

COAST LED LAMPS

500-05500
COAST LED SIDE
MARKER LAMP RED/
AMBER

Has a clear polycarbonate lens with a white bracket, a 0.5m wire outlet with blade terminals (12V)



Specifications
 Dimensions (mm): 75 x 40

500-05502
COAST LED FRONT
POSITION LAMP WHITE

Has a clear polycarbonate lens with a white bracket, a 0.5m wire outlet with blade terminals (12V)



Specifications
 Dimensions (mm): 75 x 40

500-05504
COAST LED FRONT
MARKER LAMP AMBER

Has a clear polycarbonate lens with a white bracket, a 0.5m wire outlet with blade terminals (12V)



Specifications
 Dimensions (mm): 75 x 40

500-05506
REAR POSITION LAMP
RED

Has a red polycarbonate lens with a white bracket, 0.5m wire outlet with blade terminals (12V)



Specifications
 Dimensions (mm): 75 x 40

500-05510
CHROME BRACKET ONLY
FOR COAST MARKER LAMP

Specifications
 Dimensions (mm): 75 x 40



500-05520
COAST LED LICENSE PLATE
LAMP (WHITE)

Has a polycarbonate lens with dark grey bracket & a 0.5m wire lead outlet. Note: there is no terminal or connector and two lamps are required for ADR compliance (12v DC)



500-05530
COAST LED REAR
CENTRE STOP LAMP RED

Retro fits current installation hole. Has a 0.1m wire outlet length with blade terminal and insulators.



Specifications

Dimensions (mm): 360 x 40

500-05572
COMBO LAMP AMBER/
RED/RED

Has a black housing (12/24V)



Specifications

Dimensions (mm): 228L x 108W x 40H

LED REPLACEMENT BULBS

500-05748
LED MR8 REPLACEMENT
BULB (COOL WHITE) 0.8W

Used to replace traditional MR8 halogen bulbs, it has x6 super bright LEDs and a luminous flux of 60 lumens. Operating on 12V DC, it is the equivalent to a 10W MR8 halogen bulb.



Specifications

Dimensions (mm): 34 x 25

500-05751
LED MR16 REPLACEMENT
BULB (COOL WHITE) 4W

Used to replace the traditional MR16 halogen bulb, has x3 super bright LED's and a luminous flux of 210 lumens. Operating on 12V DC, it is the equivalent to a 45W MR16 halogen bulb.



Specifications

Dimensions (mm): 50 x 47.8

500-05752
LED MR11 REPLACEMENT BULB
(COOL WHITE) 1.8W

Used to replace the traditional MR11 halogen bulb, has x12 super bright LEDs and a luminous flux of 150 lumens. Operating on 12V DC, it is the equivalent to a 24W MR11 halogen bulb.



Specifications

Dimensions (mm): 34 x 34.6

500-05753
LED G4 REPLACEMENT BULB
WITH SIDE PIN (COOL WHITE)
1.6W

Used to replace the traditional G4 halogen bulbs, it has x6 super bright LEDs and a luminous flux of 120 lumens. Operates on 12V DC.



Specifications

Dimensions (mm): 35 x 23

500-05754
LED G4 SINGLE REPLACEMENT
BULB (COOL WHITE) 1W

Used to replace reading light bulbs, it has a single super bright LED and a luminous flux of 70 lumens. Operating on 12V DC, it is the equivalent to a 10W G4 halogen bulb.



Specifications

Dimensions (mm): 28 x 12

500-05756
LED G4 REPLACEMENT BULB
WITH SIDE PIN (COOL WHITE)
1.8W

Used to replace the traditional G4 halogen bulb, it has x12 super bright LEDs and a luminous flux of 150 lumens. Operating on 12V DC, it is the equivalent to a 27W G4 halogen bulb.



Specifications

Dimensions (mm): 42 x 30

500-05757
LED G4 REPLACEMENT BULB
TOWER TYPE
(COOL WHITE) 2.7W

Used to replace the traditional G4 halogen bulb, it has x18 super bright LEDs and a luminous flux of 210 lumens. Operating on 12V DC, it is the equivalent to a 27W G4 halogen bulb.



Specifications

Dimensions (mm): 45 x 15

500-05758**LED T10 REPLACEMENT BULB (COOL WHITE) 1.35W**

Used to replace the traditional T10 halogen bulb, it has x6 super bright LEDs and a luminous flux of 105 lumens. Operating on 12V DC, it is the equivalent to a 16W T10 halogen bulb.

Specifications

Dimensions (mm): 37 x 13

**500-05766****LED FESTOON REPLACEMENT BULB (COOL WHITE) 0.54W**

Used to replace traditional festoon halogen bulbs, it has x6 super bright LED's. Operating on 12V DC, and with a luminous flux of 36 lumens, it is the equivalent to a 5.4W festoon halogen bulb.

Specifications

Dimensions (mm): 42 x 24

**500-05760****LED T10 REPLACEMENT BULB (COOL WHITE) 2.7W**

Used to replace the traditional T10 halogen bulb, it has x18 super bright LEDs and a luminous flux of 210 lumens. Operating on 12V DC, it is the equivalent to a 35W T10 halogen bulb.

Specifications

Dimensions (mm): 55 x 27

**500-05770****LED 2D FLUORESCENT TUBE REPLACEMENT LAMP (COOL WHITE) 10.1W**

Used to replace traditional round fluorescent lamps, it has x60 super bright LEDs. Operating on 12V DC, it has a luminous flux of 900 lumens.

Specifications

Dimensions (mm): 130 x 15

**500-05761****LED T10 REPLACEMENT BULB WEDGE TYPE (COOL WHITE) 1.76W**

Used to replace the traditional T10 halogen bulb, it has x13 super bright LEDs and a luminous flux of 150 lumens. Operating on 12V DC.

Specifications

Dimensions (mm): 43.2 x 10

**500-05762****LED BA15S REPLACEMENT BULB (COOL WHITE) 2.7W**

Used to replace traditional BA15S halogen bulbs, it has a single connector parallel pin and x18 super bright LEDs. Operating on 12V DC, and with a luminous flux of 250 lumens, it is the equivalent to a 36W BA15S halogen bulb.

Specifications

Dimensions (mm): 49 x 15

**500-05764****LED BA15D REPLACEMENT BULB (COOL WHITE) 2.7W**

Used to replace traditional BA15D halogen bulbs, it has a double connector parallel pin and x18 super bright LEDs. Operating on 12V DC, and with a luminous flux of 250 lumens, it is the equivalent to a 36W BA15D halogen bulb.

Specifications

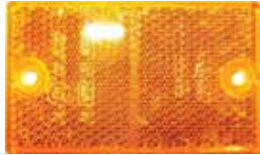
Dimensions (mm): 49 x 15



REFLECTORS

500-05550
COAST RECTANGULAR
SCREW MOUNT
REFLECTOR AMBER

Has an acrylic lens and screw mount.



Specifications

Dimensions (mm): 72 x 42

500-05552
COAST RECTANGULAR
SCREW MOUNT
REFLECTOR RED

Has an acrylic lens and screw mount.



Specifications

Dimensions (mm): 72 x 42

500-05554
COAST RECTANGULAR
SCREW MOUNT
REFLECTOR CLEAR

Has an acrylic lens and screw mount.



Specifications

Dimensions (mm): 72 x 42

500-05556
REFLECTOR CLEAR
RECTANGULAR SELF
ADHESIVE 22 X
85MM ADR APPROVED



500-05558
REFLECTOR RED
RECTANGULAR SELF
ADHESIVE 22 X 85MM
ADR APPROVED



500-05560
REFLECTOR AMBER
RECTANGULAR SELF
ADHESIVE 22 X
85MM ADR APPROVED



500-05580
ROUND REFLEX
REFLECTOR AMBER

Specifications

Diameter: 57mm
 Height: 5mm



500-05582
ROUND REFLEX
REFLECTOR RED

Specifications

Diameter: 57mm
 Height: 5mm



500-05584
ROUND REFLEX
REFLECTOR CLEAR

Specifications

Diameter: 57mm
 Height: 5mm



SPHERE™ WIRELESS LIGHTING CONTROL SYSTEM



The Sphere™ Wireless Lighting Control System is the way of the future. Easily installed on any flat surface, the system requires no drilling, no wires and no hassle—a simple lighting system at its best! How does the system work you ask? Firstly you will need the 6-Channel Receiver and a selection of Wireless Switches (whichever you feel is best for your RV setup). The Receiver will control the lighting for up to six individual zones in your RV e.g. the kitchen or the bathroom. A simple pairing procedure allows for multiple switches to be programmed to each zone and vice versa.

A master OFF function is available with all switches, enabling you to turn all lights off in all zones with one simple button. Alternatively, for a true wireless experience, the remote control can be purchased.

500-07132 SPHERE WIRELESS LIGHT SWITCH REMOTE CONTROL

A six button, multifunction remote control with six available channels enabling the user to tailor the system to their needs. The Remote Control is a handy accessory to keep in your pocket. If, for example, you have spent the day exploring your surroundings, with the Remote Control in your pocket, you can turn your RV lights on as you approach. It will work up to 50m away (provided nothing obscures the signal). Comes with a belt and clip for the user to wear when away from their RV.



Specifications

Battery Type: CR2032 Lithium Battery

Working Frequency: 433.92MHz

500-07134 SPHERE WIRELESS LIGHT SWITCH REMOTE CONTROL

A six button, multifunction remote control with six available channels enabling the user to tailor the system to their needs.



500-07140 SPHERE PANTRY DOOR SENSOR



500-07200 1-GANG WIRELESS SWITCH

Comes with x2 CR2032 lithium batteries.



500-07204**2-GANG WIRELESS SWITCH**

Comes with x2 CR2032 lithium batteries

**500-07220****6-GANG WIRELESS SWITCH**

Comes with x2 CR2032 lithium batteries

**500-07206****2-GANG WIRELESS SWITCH WITH MASTER OFF**

Comes with x2 CR2032 lithium batteries

**500-07222****6-GANG WIRELESS SWITCH WITH MASTER OFF**

Comes with x2 CR2032 lithium batteries

**500-07208****3-GANG WIRELESS SWITCH**

Comes with x2 CR2032 lithium batteries

**500-07300****6-CHANNEL (12V RECEIVER)****500-07210****3-GANG WIRELESS SWITCH WITH MASTER OFF**

Comes with x2 CR2032 lithium batteries

**500-07212****4-GANG WIRELESS SWITCH**

Comes with x2 CR2032 lithium batteries

**500-07214****4-GANG WIRELESS SWITCH WITH MASTER OFF**

Comes with x2 CR2032 lithium batteries

**500-07216****5-GANG WIRELESS SWITCH**

Comes with x2 CR2032 lithium batteries

**500-07218****5-GANG WIRELESS SWITCH WITH MASTER OFF**

Comes with x2 CR2032 lithium batteries



BLADE FUSES

500-08400
NARVA 10 AMP RED ATS
BLADE FUSE - 50 PER BOX



500-08402
NARVA 10 AMP RED ATS BLADE
FUSE - 5 PER PACK



500-08404
NARVA 15 AMP BLUE ATS
BLADE FUSE - 50 PER BOX



500-08406
NARVA 15 AMP BLUE ATS
BLADE FUSE - 5 PER PACK



500-08408
NARVA 20 AMP YELLOW ATS
BLADE FUSE - 50 PER BOX



500-08410
NARVA 20 AMP YELLOW ATS
BLADE FUSE - 5 PER PACK



500-08412
NARVA 25 AMP CLEAR ATS
BLADE FUSE - 50 PER BOX



500-08414
NARVA 25 AMP CLEAR ATS
BLADE FUSE - 5 PER PACK



500-08416
NARVA 30 AMP GREEN ATS
BLADE FUSE - 50 PER BOX



500-08418
NARVA 30 AMP GREEN ATS
BLADE FUSE - 5 PER PACK



500-08420
NARVA 40 AMP LIGHT BROWN
ATS BLADE FUSE - 50 PER
BOX



500-08422
NARVA 40 AMP LIGHT BROWN
ATS BLADE FUSE - 5 PER
PACK



500-08424
NARVA 30 AMP GREEN MAXI-
BLADE FUSE - 10 PER BOX



500-08426
NARVA 30 AMP GREEN MAXI-
BLADE FUSE - 1 PER PACK



500-08428
NARVA 40 AMP AMBER MAXI-
BLADE FUSE - 10 PER BOX



500-08442
NARVA 80 AMP CLEAR MAXI-
BLADE FUSE - 1 PER PACK



500-08430
NARVA 40 AMP AMBER MAXI-
BLADE FUSE - 1 PER PACK



500-08444
NARVA 100 AMP PURPLE
MAXI-BLADE FUSE - 10 PER
BOX



500-08432
NARVA 50 AMP RED MAXI-
BLADE FUSE - 10 PER BOX



500-08446
NARVA 100 AMP PURPLE
MAXI-BLADE FUSE - 1 PER
PACK



INLINE FUSE HOLDERS

500-08434
NARVA 50 AMP RED MAXI-
BLADE FUSE - 10 PER BOX



500-08448
NARVA IN-LINE STD ATS
BLADE FUSE HOLDER (30A
MAX) - 1 PER PACK



500-08436
NARVA 60 AMP BLUE MAXI-
BLADE FUSE - 10 PER BOX



500-08450
NARVA IN-LINE STD ATS
BLADE FUSE HOLDER (30A
MAX) - 10 PER BOX



500-08438
NARVA 60 AMP BLUE MAXI-
BLADE FUSE - 1 PER PACK



500-08452
NARVA IN-LINE MAXI
BLADE FUSE HOLDER (60A
MAX) - 1 PER PACK



500-08440
NARVA 80 AMP CLEAR MAXI-
BLADE FUSE - 10 PER BOX



500-08454
NARVA IN-LINE MAXI BLADE
FUSE HOLDER (60A MAX) - 1
PER BOX



BLADE TERMINALS

500-08456
NARVA 6.3X0.8MM TRANS-
RED MALE BLADE TERMINAL
T/S 2.5-3MM - 50 PER BOX



500-08458
NARVA 6.3X0.8MM TRANS-BLUE MALE BLADE TERMINAL T/S 4MM - 50 PER BOX



500-08460
NARVA 6.3X0.8MM TRANS-YELLOW MALE BLADE TERMINAL T/S 5-6MM - 50 PER BOX



500-08462
NARVA 6.3X0.8MM RED FLARED MALE BLADE TERMINAL T/S 2.5-3MM - 100 PER BOX



500-08464
NARVA 6.3X0.8MM BLUE FLARED MALE BLADE TERMINAL T/S 4MM - 100 PER BOX



500-08466
NARVA 6.3X0.8MM YELLOW FLARED MALE BLADE TERMINAL T/S 5-6MM - 100 PER BOX



500-08468
NARVA 6.3X0.8MM RED FEMALE BLADE TERMINAL T/S 2.5-3MM - 100 PER BOX



500-08470
NARVA 6.3X0.8MM BLUE FEMALE BLADE TERMINAL T/S 4MM - 100 PER BOX



500-08472
NARVA 6.3X0.8MM BLUE FEMALE BLADE TERMINAL T/S 4.8MM - 100 PER BOX



500-08474
NARVA 6.3X0.8MM YELLOW FEMALE BLADE TERMINAL T/S 5-6MM - 100 PER BOX



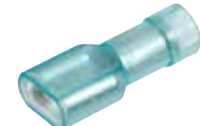
500-08476
NARVA 6.3X0.8MM TRANS-RED FEMALE BLADE TERMINAL T/S 2.5-3MM - 100 PER BOX



500-08478
NARVA 6.3X0.8MM RED FEMALE BLADE TERMINAL T/S 2.5-3MM - 100 PER BOX



500-08480
NARVA 6.3X0.8MM RED FEMALE BLADE TERMINAL T/S 2.5-3MM - 100 PER BOX



500-08482
NARVA 6.3X0.8MM TRANS-BLUE FEMALE BLADE TERMINAL T/S 4MM - 100 PER BOX



500-08484
NARVA 6.3X0.8MM TRANS-YELLOW FEMALE BLADE TERMINAL T/S 5-6MM - 100 PER B



500-08486
NARVA 4.0MM RED MALE BULLET TERMINAL T/S 2.5-3MM - 100 PER BOX



500-08488
NARVA 4.0MM TRANS-RED MALE BULLET TERMINAL T/S 2.5-3MM - 100 PER BOX



500-08490
NARVA 5.0MM BLUE MALE BULLET TERMINAL T/S 4MM - 100 PER BOX



500-08492
NARVA 4.0MM TRANS-BLUE MALE BULLET TERMINAL T/S 4MM - 100 PER BOX



500-08494
NARVA 5.0MM YELLOW MALE
BULLET TERMINAL T/S 5-6MM
- 100 PER BOX



500-08496
NARVA 4.0MM RED FEMALE
BULLET TERMINAL T/S 2.5-
3MM - 100 PER BOX



500-08498
NARVA 4.0MM TRANS-RED
FEMALE BULLET TERMINAL
T/S 2.5-3MM - 100 PER BOX



500-08500
NARVA 5.0MM BLUE FEMALE
BULLET TERMINAL T/S 4MM
- 100 PER BOX



500-08502
NARVA 4.0MM TRANS-BLUE
FEMALE BULLET TERMINAL
T/S 4MM - 100 PER BOX



500-08504
NARVA 5.0MM YELLOW
FEMALE BULLET TERMINAL
T/S 5-6MM - 100 PER BOX



SPLICE JOINERS

500-08506
NARVA RED BUTT SPLICE
CABLE JOINER T/S 2.5-3MM
- 100 PER BOX.



500-08508
NARVA BLUE BUTT SPLICE
CABLE JOINER T/S 4MM
- 100 PER BOX



500-08510
NARVA YELLOW BUTT SPLICE
CABLE JOINER T/S 5-6MM
- 100 PER BOX



RING TERMINALS

500-08512
NARVA 8.4MM RED RING
TERMINAL T/S 2.5-3MM
- 100 PER BOX



500-08514
NARVA BLUE 8.4MM BLUE
RING TERMINAL T/S 4MM
- 100 PER BOX



500-08516
NARVA 8.4MM YELLOW RING
TERMINAL T/S 5-6MM
- 100 PER BOX



500-08518
NARVA 9.5MM YELLOW RING
TERMINAL T/S 5-6MM - 100
PER BOX



BARREL LUGS

500-08520
NARVA 10MMSQ 8MM STUD
STRAIGHT BARREL CABLE LUG
- 10 PER BOX



500-08522
NARVA 10MMSQ 10MM STUD
STRAIGHT BARREL CABLE LUG
- 10 PER BOX



500-08524
NARVA 25MMSQ 8MM STUD
STRAIGHT BARREL CABLE LUG
- 10 PER BOX



500-08526
NARVA 25MMSQ 10MM STUD
STRAIGHT BARREL CABLE LUG
- 10 PER BOX



ELECTRICAL TAPE

500-08580
NARVA 19MM PVC BLACK
INSULATION TAPE - 10 ROLLS



500-08582
NARVA 19MM PVC BLACK
FLAME RETARDANT
INSULATION TAPE - 10 ROLLS



POWER INLETS & OUTLETS

500-09000
POWER INLET SOCKET 15A
IN WHITE



500-09002
POWER INLET SOCKET 15A
IN BLACK



500-09004
POWER OUTLET SOCKET
10A IN WHITE



500-09006
POWER OUTLET SOCKET
10A IN BLACK



500-09012
MOUNTING FLANGE
13MM IN WHITE



500-09014
MOUNTING FLANGE
13MM IN BLACK



500-09016
MOUNTING FLANGE
20MM IN WHITE



500-09018
MOUNTING FLANGE
20MM IN BLACK



500-09050
POWER POINT SINGLE
10A DOUBLE POLE



500-09052
POWER POINT DOUBLE
10A DOUBLE POLE



500-09054
POWER POINT DOUBLE
POLE 10A
WITH DUAL USB
CHARGER



500-09056
QUAD POWER
POINT 10A
DOUBLE POLE



500-09062
SINGLE POWER POINT
DOUBLE POLE DEEP IN
WHITE



500-03002
FLAP TO SUIT CLIPSAL
OLD STYLE INLET



500-09064
DOUBLE POWER POINT
10A DOUBLE POLE
DEEP



500-03010
CLIPSAL WHITE EXTERNAL
10AMP POWER OUTLET
(3 PIN)

10DWP single socket outlet, 250VAC, 10A, double pole with weatherproof flap. The terminal bores accommodate 4 x 2.5sq mm cables. It is auto-switched and complies with AS/NZS 3112.



500-09070
ARCHITRAVE SWITCH 1 GANG
WHITE



Specifications

Protection rating: IP44

Dimensions: 93L x 82W x 26D (mm)

Mounting centres: 70 x 54 (mm)

500-03012
FLAP TO SUIT CLIPSAL
OLD STYLE OUTLET



500-09072
ARCHITRAVE SWITCH 1
GANG BLACK



500-03020
CLIPSAL (NEW) WHITE
EXTERNAL 15A POWER INLET

A flush inlet with weatherproof flap. (Ensure the cable shroud is secured after cable connections).



500-02600
NARVA 12 PIN FLAT
TRAILER PLUG

7 pole amp rating per pole 15A at 12V, 5 pole amp rating per pole 35A at 12V



500-03021
CLIPSAL BLACK EXTERNAL
15AMP POWER INLET



500-02602
NARVA 12 PIN TRAILER SOCKET

7 pole amp rating per pole 15A at 12V
 5 pole amp rating per pole 35A at 12V



500-03022
FLAP TO SUIT CLIPSAL NEW
STYLE INLET



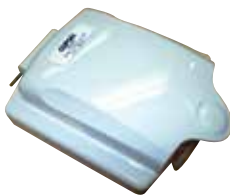
500-03028
CLIPSAL (NEW) BLACK
EXTERNAL 10 AMP POWER
OUTLET



500-03030
CLIPSAL (NEW) WHITE
EXTERNAL 10A POWER OUTLET
WITH WATERPROOF FLAP



500-03032
FLAP TO SUIT CLIPSAL
NEW STYLE OUTLET



500-03050
CLIPSAL MOUNTING
FLANGE TO SUIT NEW
STYLE INLET/OUTLET



500-03052
CLIPSAL MOUNTING FLANGE
TO SUIT OLD STYLE INLET/
OUTLET



500-03054
CLIPSAL MOUNTING FLANGE
BLACK T/S NEW STYLE INLET



500-03101
CLIPSAL COVER TO SUIT
CIRCUIT BREAKER (SLIM)
 An 18mm wide cover to suit single circuit
 breakers (such as 500-03105)



500-03102
CLIPSAL COVER TO SUIT
CIRCUIT BREAKER
 Suitable for covering 36mm wide circuit
 breakers.



500-03105
CIRCUIT BREAKER (WITH
EARTH LEAKAGE)
 Clipsal Max 4 - combination residual current
 devices and miniature circuit breaker,
 remember to test these on a monthly
 basis by operating their inbuilt test button,
 standard slim type, non-delayed, 240V, 16A -
 30mA, 1-phase +N, 6kA, 1 module wide, 50Hz.



NOT
 AVAILABLE IN
 NEW ZEALAND

500-03110
CLIPSAL 75 OHM
COAXIAL CABLE
SURFACE SOCKET

These sockets are designed to
 accommodate solid core conductor
 coaxial cables with insulation up
 to 5mm (diameter) for solderless
 connections.



NOT
 AVAILABLE IN
 NEW ZEALAND

500-03120
CLIPSAL 492/32
FIXED POLARITY
PLUG GREY

Flexible two-pin plugs do not
 require insulated pins to comply
 with Australian/New Zealand
 Standards. This is a flexible plug with two parallel pins,
 10A.



NOT
 AVAILABLE IN
 NEW ZEALAND

500-03122
CLIPSAL 438/32 FIXED POLARITY CORD SOCKET GREY

32V Socket, 15A 2pin polar to suit 1.5mm² (ordinary duty)



500-03400
ELECTUS ANDERSON PLUG (50AMP)

A 50A, high current connector that is used in domestic and industrial applications e.g. 4WD, boating and automotive. It comes with a pair of contacts.



Specifications

Contact Wire Size: 6AWG
Voltage Rating: 600V (AC or DC)
Max Wire Insulation Diameter: 11mm

500-03124
402/32 FIXED POLARITY SOCKET WHITE

Front connecting surface socket with two polarized pins, 32V, 15A.



COAST HEAVY DUTY EXTENSION LEADS

Coast to Coast's new extension leads offer you a wider variety of length options so you can find the perfect sized lead for your RV or campsite, including an extra short size of 8m and extra-long size of 25m!

Our new leads are LED equipped and made from a 3 core, 1.5mm² cable with a moulded 15A plug and socket. To protect the face of the socket, they have a full 360° projecting shroud as well. All of Coast's extension leads are approved and manufactured to Australian Standards and are not suitable for use with domestic power points. Keep your site powered from any distance, with Coast to Coast's new heavy-duty extension leads!

500-03200
SINGLE POWER OUTLET DOUBLE POLE 15D WHITE

Double pole power outlet single, 250V, 10A.



500-03549
COAST 8M/15AMP HEAVY DUTY 240V EXTENSION LEAD - LED EQUIPPED



500-03204
DOUBLE POWER OUTLET DOUBLE POLE 25D WHITE

Twin (standard) size horizontal mount power outlet with double plate, 250V, 10A.



500-03551
COAST 12M/15AMP HEAVY DUTY EXTENSION LEAD - LED EQUIPPED



500-03206
MOUNTING BLOCK WHITE

Moulded mounting block, one gang to suit all standard size accessories.



500-03553
COAST 17M/15AMP HEAVY DUTY EXTENSION LEAD - LED EQUIPPED



500-03208
DOUBLE POLE SWITCH 30D WHITE

Conventional architrave switch, the terminals accommodate 3 x 2.5mm sq. cables. 250V 10A AC only.



500-03555**COAST 22M/15AMP HEAVY DUTY
EXTENSION LEAD
- LED EQUIPPED****500-03557****COAST 25M/15AMP HEAVY DUTY
EXTENSION LEAD
- LED EQUIPPED****500-03600****CMS SINGLE POWER
OUTLET (BEIGE)**

A 10A power outlet that comes with a 20A installation coupler, and is double pole switched.

**500-03602****CMS SINGLE POWER
OUTLET (WHITE)**

A 10A power outlet that comes with a 20A installation coupler, and is double pole switched.

**500-03610****CMS DOUBLE POWER
OUTLET (BEIGE)**

Power Point Beige.

**500-03620****CMS DOUBLE POWER
OUTLET (WHITE)**

Double 10A GPO with 20A installation couplers, Double Pole switched.

**INTERCONNECTING LEAD 20A**

Ordinary duty leads are manufactured from 3 core 2.5sqmm flexible cable. They are rated at 20A terminated with male and female connectors.



Part Number	Description
500-03700	CMS 500mm interconnecting lead 20A beige
500-03710	CMS 1000mm interconnecting lead 20A beige
500-03720	CMS 1300mm interconnecting lead 20A beige
500-03730	CMS 1500mm interconnecting lead 20A beige
500-03740	CMS 1700mm interconnecting lead 20A beige
500-03750	CMS 2000mm interconnecting lead 20A beige
500-03760	CMS 2300mm interconnecting lead 20A beige
500-03770	CMS 2500mm interconnecting lead 20A beige
500-03790	CMS 2700mm interconnecting lead 20A beige
500-03800	CMS 3000mm interconnecting lead 20A beige
500-03810	CMS 3200mm interconnecting lead 20A beige
500-03820	CMS 3300mm interconnecting lead 20A beige
500-03830	CMS 3500mm interconnecting lead 20A beige
500-03840	CMS 3800mm interconnecting lead 20A beige
500-03850	CMS 4000mm interconnecting lead 20A beige
500-03860	CMS 4200mm interconnecting lead 20A beige
500-03870	CMS 4500mm interconnecting lead 20A beige
500-03880	CMS 4700mm interconnecting lead 20A beige
500-03890	CMS 5000mm interconnecting lead 20A beige
500-03910	CMS 5500mm interconnecting lead 20A beige
500-03920	CMS 5700mm interconnecting lead 20A beige
500-03930	CMS 6000mm interconnecting lead 20A beige
500-03940	CMS 6300mm interconnecting lead 20A beige
500-03950	CMS 6500mm interconnecting lead 20A beige
500-03960	CMS 6800mm interconnecting lead 20A beige

CIRCUIT BREAKER CONNECTING LEAD 20A BEIGE



Part Number	Description
500-04000	CMS 1000mm Circuit breaker connecting lead 20A beige
500-04010	CMS 2000mm Circuit breaker connecting lead 20A beige
500-04050	CMS 3500mm Circuit breaker connecting lead 20A beige
500-04070	CMS 4400mm Circuit breaker connecting lead 20A beige
500-04100	CMS 6300mm Circuit breaker connecting lead 20A beige

500-04150 CMS CIRCUIT BREAKER LOOM ASSY W/H REMOTE EARTH WIRE

The CMS Circuit Breaker with Loom Assembly is a protective device that combines two functions, it acts as a residual current device and as a circuit breaker. It comes with a remote earth wire and features CMS' soft-wire interconnecting leads for a fast and simple installation.

- > 240V
- > 16A-30mA
- > 4.5kA
- > SAA120741EA AS/NZs61009.1



500-04200 CMS MOUNTING BLOCK

Mounting block for power points and switch plates beige.



500-04202 CMS MOUNTING BLOCK (WHITE)

Mounting block for power points and switch plate.



500-04210 CMS SINGLE SWITCH PLATE

Single switch plate, beige only.
(Extra low voltage only eg 12V, Not for 240V)



500-04220 CMS DOUBLE SWITCH PLATE

Double switch plate, beige only.
(Extra low voltage only eg 12V, Not for 240V)



500-04230 CMS TRIPLE SWITCH PLATE

Triple switch plate, beige only.
(Extra low voltage only eg 12V, Not for 240V)



500-04250 CMS TV ANTENNA OUTLET BEIGE

Connects your TV to the aerial on your RV's roof. Fits into the wall of your RV.



500-04262 CMS 1-IN 2-OUT DOUBLE ADAPTOR (CLEAR)

J Series



500-04280 CMS MOUNTING SHROUD

CMS mounting shroud for outlets and switch plates (beige).



500-04300**CMS 2-WAY 10A SWITCH**

250V 2-way with looping terminal (without indicator).

**500-04310****CMS 10A DOUBLE POLE SWITCH SOCKET**

Suitable for use with CMS interconnecting leads only, direct connection.

Recess Required: 61mm

250V, 50Hz, 20Amp installation coupler

**500-04312****CMS 15A POWER INLET**

Suitable for use with CMS interconnecting leads only, direct connection.

Recess Required: 61mm

250V, 50Hz, 20A installation coupler.

**500-04314****CMS TWIN DOUBLE POLE AUTO SOCKET**

A 20A installation coupler with a 10A socket outlet. (250V, 50Hz)

**500-04320****CMS 3 WAY ADAPTOR (BEIGE)**

20A, 240V, IP4X

**CMS POWER OUTLETS**

240v CMS Electrical products are not your usual fittings as they feature a soft-wire install with interconnecting leads instead of the hard-wire install of standard fittings. The advantage to this is that it is fast and simple to install or un-install as it is just a coupling connection to a lead rather than hard-wiring actual wire to connect the fitting.

500-04400**DOUBLE NATURAL - WHITE****500-04402****SINGLE N/W + DUAL 4A USB W/12VDC TERMINAL****15AMP TO 10 AMP ADAPTORS****500-04504****ELECTUS PORTABLE RCD WITH 15A TO 10A MAINS PLUG CONVERSION**

Featuring a 10A circuit breaker/RCD for overload protection, this portable RCD is ideal if you have a device with a 15A mains plug but no 15A power outlet available.

**Specifications****Voltage:** 240V AC, 50Hz**Max Load:** 2400W, 10A**Rated Residual Current:** 30mA**Dimensions:** 180H x 135D x 124W (mm)**500-04501****AMP-FIBIAN RV-02MAX 15AMP TO 10AMP ADAPTER**

The Ampfibian adaptor allows for a 15A load (e.g. that of a caravan) to connect to a standard household power point (10A). With upgraded features such as being waterproof to IP55, being able to accept leads up to 12mm in diameter and with a new H-Class rating, the Ampfibian is the safe option to connect to domestic outlets. It will automatically trip at 10A if the power outlet becomes overloaded. Designed and made in Australia, the Ampfibian comes with RCD and overload protection, as well as a two year warranty.



500-04503
AMP-FIBIAN MINI
15AMP TO 10AMP
ADAPTER

Suitable for use where a waterproof rating is not essential, the Ampfibian Mini has all the same features as its big brother but with an IP33 rating. It has all the essentials such as RCD and overload protection, and a 10A circuit breaker which prevents overloading by cutting the power if it exceeds 10A (2400W). Designed and made in Australia, it comes with a two year manufacturer's warranty.



Specifications

Class: L - suitable for DIY/Handyman jobs

RCD: 30mA, 10kA fault current

Power: 220-240VAC, 50-60Hz

500-04506
AMP-FIBIAN RV-PLUS
15AMP TO 10AMP
ADAPTER WITH
OVERLOAD

The Ampfibian RV Plus is the perfect power adapter for caravan/RV owners. Compact for travel, and weatherproof for outdoor use, it lets 15A devices connect legally to 10A power points and includes fast acting earth leakage safety protection.



Features

- > It is water resistant to IP-55 (jets of water from all directions) and made from impact resistant plastic.
- > Works with ordinary and heavy-duty caravan leads up to 12mm diameter.
- > 240V 10A 2400W circuit breaker
- > R.C.D. for personal protection
- > Padlock attachment point locks lid
- > Power indicator light in socket
- > Certified to comply with Australian Standards AS/NZS-3190 & AS/NZS-3001
- > Two year warranty
- > Designed & Made in Australia)

500-04508
AMP-FIBIAN
WEATHERPROOF
CARAVAN SURGE
PROTECTOR

Australia's only portable 15A caravan surge protector! Protects your inverter and electronic gear from power spikes and surges. Rated at 15 Amps, with a 1000 Joule power absorption rating and four integrated fuses, this touch little product protects your expensive investment.



Features

- > Red warning light tells you if the power point is incorrectly wired before plugging in
- > Tough weatherproof housing seals the connection and allows you to see the indicator lights.
- > Two spring-loaded cleats stop the caravan lead pulling out
- > Flip-up hook lets you hang it off the ground
- > 15 Amp plug goes into the site's power supply or generator before your caravan.
- > Compatible with Ampfibian 15A to 10A Power Adaptors
- > Meets Australian and New Zealand electrical standards (AS/NZS 3120:2011)

Specifications

240V / 50Hz / 15A / 3600W

1000 Joule protection

Meets AS/NZ 3120:2011

IP55 Weatherproof

500-04509
AMP-FIBIAN
WEATHERPROOF
CARAVAN SURGE
PROTECTOR
REPLACEMENT
CARTRIDGE



500-04520
POD 15 AMP TO 10
AMP ADAPTER

Designed in South Australia, the POD is great for the RV and tradie industry. Its yellow and compact housing, makes it a portable powerhouse resulting in an efficient 15Amp to 10Amp power adapter. It has water ingress protection (IP55) and has been tested to comply with AS/NZ3190:2011. Safety comes first with the POD, it also features RCD overload protection as well as an inbuilt circuit breaker for current overload protection. Other handy features include a clear lid for easy inspection, a cord clamp to ensure your domestic supply cannot pull free and a convenient hook for hanging when in use. Comes with a one year manufacturer's warranty.



Specifications

Max loading: 10A

Suits ordinary duty 15A leads & features a 1.5m lead

NARVA ACCESSORY SOCKETS

500-05070
SURFACE MOUNT ACCESSORY SOCKET

Ideally suited for RV and marine type applications, the socket has a dustproof rubber cover and a plastic housing. It is suitable for interior or exterior installations, however in the case of an exterior fitment, the socket opening should point towards the ground. Comes in a single blister pack.

**Specifications**

Amperage Rating: 20A at 12V, 10A at 24V
Dimensions (mm): 80 x 50

500-05072
NARVA SURFACE MOUNT ACCESSORY (BLACK)

Features dustproof cover and heavy-duty construction. Can be installed with or without the mounting panel. The fitting mechanism allows installation into interior or exterior panels including steel and aluminium. Can be installed with or without the mounting panel.



Moulded housing allows fitment to interior or exterior panels for easy installation.

Specifications

Rating: 20A at 12V, 10A at 24V
Dimensions (mm): 80 x 55

500-05304
ACCESSORY SOCKET H/D**Specifications**

Amperage Rating: 20A at 12V, 10A at 24V
Mounting Opening: 29mm diameter

**500-05312**
ACCESSORY SOCKET DUAL USB H/D**Specifications**

Output: 5V, 2.5A
Mounting Opening: 29mm diameter

**500-05318**
ACCESSORY SOCKET TWIN ACCESSORY/ DUAL USB H/D**Specifications**

USB Output: 5V, 2.5A
Mounting Opening: 29mm diameter

**500-05322**
ACCESSORY SOCKET SURFACE MOUNT DUAL USB H/D**Specifications**

USB Output: 5V, 2.5A

**500-05324**
ACCESSORY SOCKET SURFACE BLACK MOUNT TWIN SOCKETS H/D**Specifications**

Amperage Rating: 20A at 12V, 10A at 24V per socket

**500-05325**
ACCESSORY SOCKET WHITE SURFACE MOUNT TWIN SOCKETS H/D**Specifications**

Amperage Rating: 20A at 12V, 10A at 24V per socket

**500-05332**
ACCESSORY SOCKET SURFACE MOUNT TWIN ACCESSORY / DUAL USB H/D**Specifications**

Accessory Socket: 20A at 12V, 10A at 24V
USB Output: 5V, 2.5A
Mounting Opening: 9mm diameter per socket

**500-05334**
ACCESSORY SOCKET WHITE SURFACE MOUNT TWIN ACCESSORY / DUAL USB H/D**Specifications**

Accessory Socket: 20A at 12V, 10A at 24V
USB Output: 5V, 2.5A

**500-05340**
ACCESSORY SOCKET H/D AND 12/24V DC L.E.D VOLT METER

Easy to read L.E.D Volt Meter displays accurate battery voltage level.

Specifications

Accessory Socket: 20A at 12V, 10A at 24V
Volt Meter Range: 6-33V DC





Coast to Coast's solar panels are made from 100% silicon wafers, not cut-offs like some lesser quality panels. They also have a silicon nitride (SiN) antireflective coating to ensure more light is absorbed in all weather conditions.

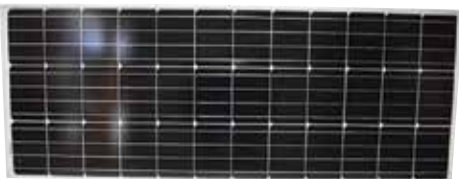
Features

- > By-passed diodes to minimise power drops caused by shade
- > An anodised aluminium frame to withstand rust
- > Anti-reflective, high transparency tempered glass for durability

500-06117 SOLAR PANEL 100 WATT MONO-CRYSTALLINE SLIMLINE

Specifications

Max Power Voltage: 18.0V
Max Power Current: 6.0A
Dimensions: 1310mm x 506mm x 35



500-06125 MONO CRYSTALLINE 120W PANEL SLIMLINE

Specifications

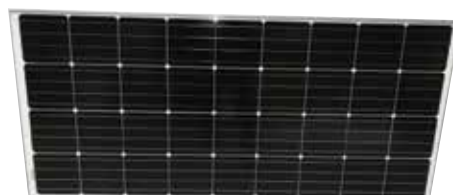
Max Power Voltage (V_{pm}): 17.6V
Max Power Current (I_{pm}): 6.8A
Dimensions: 1196mm x 674mm x 40mm
Weight (kg): 10.8



500-06131 SOLAR PANEL 160 WATT MONO-CRYSTALLINE

Specifications

Max Power Voltage: 18.0V
Max Power Current: 8.89A
Dimensions: 1482mm x 674mm x 35mm
Weight (kg): 10.8



500-06170 SOLAR PANEL MOUNTING BRACKETS (PACK 4)

Suitable for use when installing any of the Coast to Coast solar panels. Note that in the case of the 150W solar panel, two sets are recommended to provide extra support.



500-06172 SOLAR PANEL UNIVERSAL MOUNT KIT

Sold as a kit containing: x4 corner mounts (top and bottom), x2 centre mounts (top and bottom), x20 locking screws and x40 height adjusting screws (x20 large for a 35mm frame and x20 small for a 40mm frame).



SPHERE SOLAR CHARGE REGULATORS

Solar power is one of the most convenient and portable ways to power your campsite! Now, you can take control of your power with Sphere's new Solar Charge Regulators! Direct the flow of your solar power where you need it most, with a simple and user-friendly design and built-in protection against overcharges.

500-06220 SPHERE PWM 12V/24V 40A SOLAR CHARGE CONTROLLER

The Sphere PWM Solar Charge Controller adopts an upgraded 3-stage PWM charging algorithm, which applies an equalizing charge to the battery periodically to prevent it from non-equalization and sulfuration, extending the battery's service life (with the exception of GEL and lithium batteries). Boasting an industrial grade design, the Solar Charge Controller is able to function in various tough conditions with TVS lighting protection.



- > Advanced 3-stage PWM charging algorithm
- > Overload, overcharge, and over-discharge protection
- > Dot Matrix Graphic LCD Screen
- > Multiple charging options for various battery types
- > Automatically recognises 12V/24V system voltages
- > User-friendly design with intuitive operations

Specifications

Rated Current: 40A
Max PV Input: 600W/12V
Max. Solar Energy Input Voltage: < 55V
Max. Voltage at Battery End: < 34V

500-06222 SPHERE MPPT 12V/24V 40A SOLAR CHARGE CONTROLLER

With advanced dual-peak or multi-peak tracking technology, the Sphere MPPT Controller is still able to accurately track the maximum power point even when the solar panel is shadowed or partly fails. The controller is equipped with an LCD screen which can display abnormality information to help users to quickly identify system faults.



- > Advanced dual-peak or multi-peak technology
- > Built-in maximum power point tracking algorithm
- > MPPT tracking efficiency up to 99.9% with advanced conversion efficiency to as high as 98%
- > Multiple charging options for various battery types
- > Automatic recognition of battery voltage
- > LED fault indicators and an LCD Screen
- > Built-in over-heating protection mechanism

Specifications

Rated Charging Current: 40A
Max PV Input: 550W/12V
System Voltage: 12V/24V Auto
Max. Solar input Voltage: 100, 90V

SPHERE TYRE INFLATORS

500-06300 SPHERE SWIFT TYRE INFLATOR 28L/MIN

Ideal for 4x4s, SUVs, caravans and motorhomes.

Inflates 4x4 tyre in 6 minutes and a car tyre in just 2.5 minutes. Simple set up - just rotate dial to set pressure. Back lit digital display makes it easy to set your desire pressure Automatically stops when the pressure is reached LED light built in for ease of use at night. Long cables to reach tyres all around the vehicle. Comes with three piece adaptor kit.



Specifications

Product Dimensions (mm): H168 x W238 x D123
Weight (kg): 2.026
Voltage: 12V DC
Watts: 180W

500-06302
SPHERE RAPID FLOW
TYRE INFLATOR
33L/MIN

Ideal for 4x4s, SUVs, caravans and motorhomes. Powerful inflation from a 12V socket - 4x4 tyre inflates in 5 mins, car tyre in 2 mins.

Back lit digital display makes it easy to set your desire pressure. Automatically stops when the pressure is reached. LED light built in for ease of use at night. Long cables to reach tyres all around the vehicle. Comes with three piece adaptor kit.



Specifications

Product Dimensions (mm): H172 x W260 x D128

Weight (kg): 2.696

Voltage: 12V DC

Watts: 180W

500-06512
NARVA TRAILER PLUG
7 PIN LARGE ROUND
PLASTIC BLISTER PACK



500-06514
NARVA TRAILER PLUG 7 PIN LARGE ROUND
PLASTIC BLISTER PACK



TRAILER PLUGS

500-06306
NARVA H/DTY
5MT ACCESSORY
EXTENSION LEAD



500-06520
NARVA TRAILER PLUG
7PIN FLAT BLISTER
PACK



500-06500
NARVA TRAILER PLUG
6 PIN SMALL ROUND
PLASTIC BLISTER



500-06522
NARVA CAR SOCKET
7 PIN FLAT BLISTER
PACK



500-06504
NARVA TRAILER PLUG
7 PIN SMALL ROUND
PLASTIC BLISTER PACK



500-06532
NARVA TRAILER
ADAPTOR 7 PIN
ROUND CAR TO 6 PIN
ROUND VAN



500-06506
NARVA CAR SOCKET 7 PIN SMALL ROUND
PLASTIC BLISTER PACK



500-06536
NARVA TRAILER
ADAPTOR 7 PIN
ROUND CAR TO 7 PIN
FLAT VAN



500-06540
NARVA TRAILER
ADAPTOR 7 PIN FLAT
CAR TO 7 PIN ROUND
VAN



500-06544
NARVA TRAILER
ADAPTOR 7 PIN LARGE
ROUND CAR TO 7 PIN
FLAT VAN



500-06548
NARVA TRAILER
ADAPTOR 7 PIN FLAT
CAR TO 7 PIN LARGE
ROUND VAN



500-06552
NARVA TRAILER
ADAPTOR 7 PIN LARGE
ROUND CAR TO 7 PIN
SMALL ROUND VAN



500-06560
NARVA TRAILER
ADAPTOR 7 PIN SMALL
ROUND CAR TO 7 PIN
LARGE RND VAN



500-06562
NARVA HEAVY DUTY
50AMP CONNECTOR
HOUSING

Has an impact resistant polycarbonate housing and silver plated solid copper terminals.



Specifications

Amperage rating: 50A

Suits cable size: 8mm²

Operating temperature: -20°C to 105°C

500-02600
NARVA 12 PIN FLAT
TRAILER PLUG

7 pole amp rating per pole
 15A at 12V

5 pole amp rating per pole
 35A at 12V



500-02602
NARVA 12 PIN TRAILER SOCKET

7 pole amp rating per pole 15A at 12V

5 pole amp rating per pole 35A at 12V



500-90004N
ELECTREX 10M CARAVAN
SUPPLY LEAD STANDARD

A supply lead for caravans and motorhomes allowing for connection to camp site power supply posts.

Comes complete with a plug, connector and a strain relief dog bone.



500-90006N
ELECTREX 10M ANGLED
CARAVAN SUPPLY LEAD

A supply lead for caravans and motorhomes allowing for connection to camp site power supply posts.

Comes complete with a plug, angled connector and a strain relief dog bone.



500-90008N
ELECTREX CARAVAN
SUPPLY ADAPTOR

Allows you to provide power to your caravan or motorhome from a domestic power point. The Caravan Supply Adaptor has a 10A MCB to protect the domestic power supply.



500-90010N
ELECTREX 10M CARAVAN
SUPPLY LEAD WITH C/W
J/BOX

Power cord locker with a 10m fixed supply lead.



500-90012N
ELECTREX EXTERNAL
INLET PLUG

A 240V blue surface mounting IP67 inlet. Rating: 16A



Specifications

Pins: 2P + E
Earth Position: 6H

500-90014N
ELECTREX PLUG-FEMALE

Optima Series IP67 connector. It is a blue 240V connector rated at 16A.



Specifications

Pins: 2P + E
Earth Position: 6H Ins. Perforation

500-90016N
ELECTREX PLUG-MALE

An IP44, blue, 240V plug, rated at 16A.



Specifications

Pins: 2P + E
Earth Position: 6H Ins. Perforation

500-90022N
ELECTREX FEMALE PLUG
90 DEGREE (FOR FLUSH
MOUNT INLET)

Optima Series IP44 connector. It is a blue 240V connector rated at 16A.

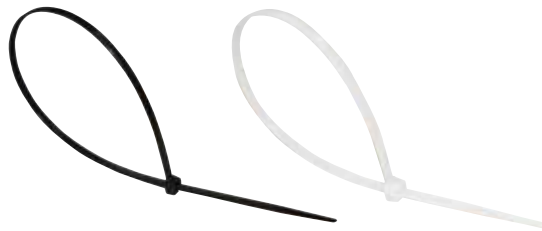


Specifications

Pins: 2P + E
Earth Position: 6H (Right Angle)

COAST TO COAST CABLE TIES

High quality self-locking nylon cable ties available in black or white in 11 different sizes.



Part Number	Description
500-08000	2.5x150mm Cable Tie Black 100pcs/Bag
500-08004	2.5x200mm Cable Tie Black 100pcs/Bag
500-08008	3.6x150mm Cable Tie Black 100pcs/Bag
500-08012	3.6x200mm Cable Tie Black 100pcs/Bag
500-08016	3.6x250mm Cable Tie Black 100pcs/Bag
500-08020	3.6x300mm Cable Tie Black 100pcs/Bag
500-08024	4.8x200mm Cable Tie Black 100pcs/Bag
500-08028	4.8x250mm Cable Tie Black 100pcs/Bag
500-08032	4.8x300mm Cable Tie Black 100pcs/Bag
500-08036	4.8x360mm Cable Tie Black 100pcs/Bag
500-08002	2.5x150mm Cable Tie White 100pcs/Bag
500-08006	2.5x200mm Cable Tie White 100pcs/Bag
500-08010	3.6x150mm Cable Tie White 100pcs/Bag
500-08014	3.6x200mm Cable Tie White 100pcs/Bag
500-08018	3.6x250mm Cable Tie White 100pcs/Bag
500-08022	3.6x300mm Cable Tie White 100pcs/Bag
500-08026	4.8x200mm Cable Tie White 100pcs/Bag
500-08030	4.8x250mm Cable Tie White 100pcs/Bag
500-08034	4.8x300mm Cable Tie White 100pcs/Bag
500-08038	4.8x360mm Cable Tie White 100pcs/Bag
500-08042	7.6x400mm Cable Tie White 100pcs/Bag
500-08040	7.6x400mm Cable Tie Black 100pcs/Bag

CAFRAMO FANS



Coast to Coast's range of high quality Caframo fans are researched, designed, developed and manufactured in Canada for the world.

Caframo fans are constructed with the highest quality and greatest care to deliver high-end, unique products boasting features to increase your comfort. All of the fans can be either surface or flush mounted and are available in black or white.

SIROCCO II

The all new Sirocco II fan features a unique gimbaled design that allows 360° airflow with versatile 12/24 Volt auto-sensing capability. The improved control layout, increased timer settings and quieter operation make the Sirocco II the perfect choice for caravanning in comfort.

Specifications

Colours: Black and White

Product Size (mm): 90(L) x 241(W) x 305(H)

Product Weight: 1.2kg

500-10000

CAFRAMO SIROCCO II 12/24V WHITE 7" GIMBAL FAN WITH 3 SPEED



500-10002

CAFRAMO SIROCCO II 12/24V BLACK 7" GIMBAL FAN WITH 3 SPEED



BORA

The quietest and most powerful fan in its class! The model 748 Bora 12 Volt fan is designed to deliver the features needed to solve any airflow challenge. The Bora features a long-life motor with center push control, grills on front and back and built-in handle for easy up/ down or side-to-side positioning.

Specifications

Colours: Black and White

Product Size (mm): 90(L) x 165(W) x 241(H)

Product Weight: 0.7kg

500-10004

CAFRAMO BORA 12V WHITE 6" FAN WITH 3 SPEED



500-10006

CAFRAMO BORA 12V BLACK 6" FAN WITH 3 SPEED



MAESTRO

Building on the popularity of the original Bora™ fans, the Maestro™ boasts an improved design along with a bright LED for use at night. Equipped for wall mounting, its convenient wired remote pendant control can be located up to six feet away from the fan.

Specifications

Colours: Black and White

Product Size (mm): 97(L) x 165(W) x 241(H)

Product Weight: 0.7kg

500-10008

CAFRAMO MAESTRO 12V WHITE 6" VARIABLE SPEED FAN WITH LIGHT AND WIRED CONTROL



500-10010

CAFRAMO MAESTRO 12V BLACK 6" VARIABLE SPEED FAN WITH LIGHT AND WIRED CONTROL



BRIGGS & STRATTON GENERATORS



Lightweight and portable inverter generators are great for travel and recreational activities. To help ensure consistent power at any speed, DC power is produced and the onboard computer converts it to high quality AC output. This process helps maintain steady, accurate, and clean power output at a level similar to what you experience in your home. The PowerSmart Series™ Inverter Generators produce less than 3% total harmonic distortion making it safe for laptop computers, TVs and game systems.

500-30654**3000 WATT INVERTER GENERATOR**

The P3000 PowerSmart Series™ Inverter Generator by Briggs & Stratton takes portable power generation to the next level. Inverter technology makes it safe for sensitive electronics. The computer controlled technology supplies smooth, steady power - and adjusts engine speed accordingly to suit your power needs and save fuel. Twin cushioned carrying handles, a telescopic style handle and wheels make it easy to move. Plus the on-board LCD StatStation® display keeps you informed about power use, run time and maintenance reminders. Now that's smart power.

- > 171cc 4-stroke OHV engine
- > 2 x 240V 15amp sockets (Water Ingress Protection IP44)
- > 12V/5A auxiliary sockets
- > Parallel connector port (Optional kit to join 2 sets together)
- > Statstation™ Digital Display
- > Computer controlled inverter technology for a quiet and efficient engine
- > USB charging port
- > On board monitoring system
- > Overload alarm, circuit breaker and low oil sensor (engine protection)
- > 3 Years Limited Domestic Warranty (conditions apply)

Specifications

Running Watts: 2,600
 A/C Starting Watts: 3000
 Engine displacement: 171
 Fuel Tank Capacity (Litres): 5.7
 Noise Level: 58Db
 AC Outlet: 230 Volts/15Amp
 DC Outlet: 12Volt/5Amp
 Weight: 44Kg
 Length: 66cm
 Width: 36cm
 Height: 53cm



500-30697 2200 WATT INVERTER GENERATOR

The P2200 PowerSmart Series™ Inverter offers an affordable, reliable power source from a brand you can trust. Whether you are holidaying, camping, caravanning or require back up power for light trade applications, the PowerSmart inverter generator is ideally suited to meet your needs. With easy starting and quieter running you can enjoy the little conveniences of home anywhere you are - lights, fans, a coffee maker, laptop or TV.



- > 105.6cc 4-stroke OHV engine
- > 2 x 240V 15amp sockets (Water Ingress Protection IP44)
- > 12V-5A fully regulated auxiliary outlet with USB adapter
- > Parallel connector port (Optional kit to join 2 sets together)
- > Computer controlled inverter technology for a quiet and efficient engine
- > Main circuit reset (overload) - no need to switch machine off
- > Overload alarm, low oil alert and shutdown (engine protection)
- > 3 Years Limited Domestic Warranty (conditions apply)

Running Watts: 1,700
Starting Watts: 2200
Engine (OHV): 4-Stroke
Engine displacement: 105.6
Fuel Tank Capacity (Litres): 3.7
Noise Level: 58DbAC
Outlet: 230 Volts/15AmpDC
Outlet: 12Volt/5Amp
Weight: 24kg
Length: 53cm
Width: 32cm
Height: 44cm

500-36330 PARALLEL KIT

Connect two PowerSmart Series™ Inverter Generators together using the Parallel Kit. Whether you have two-P2200 Inverters, two-P3000 Inverters, or one of each, the Parallel Kit gives you more continuous power to operate your RV air conditioner, lights, cell phone chargers, and other portable appliances at the same time.



500-07600 GENERATOR SLIDE ASSEMBLY



Most applications require increased power for start-up. When running multiple items please refer to the table below to calculate your power requirements.

Application	Starting Surge	Running Wattage	P2200	P3000
Air Con (Inverter) 5.2kW	1500	1500	•	•
Air Con (Portable) 2.8kW	2100	1200		•
Refrigerator/Freezer	1350	550	•	•
Microwave	1000	1000	•	•
Electric Stove 8" Element	2100	2100		•
Mobile Phone Charger	25	25	•	•
LCD TV 32"	75	75	•	•
Plasma TV 50"	500	500	•	•
Laptop	250	250	•	•
Radio	10	10	•	•
Portable Heater	1500	625	•	•
Light Bulb	75	75	•	•
Slow Cooker	240	240	•	•
Coffee Maker	1300	1300	•	•

500-27346 BRIGGS & STRATTON 4-STROKE LET'S GET STARTED KIT



500-27390 BRIGGS & STRATTON OIL SAE 30 - 600ML



500-36344 BRIGGS & STRATTON P2200 WATER RESISTANT COVER



500-36345 BRIGGS & STRATTON P3000 WATER RESISTANT COVER



BRIGGS & STRATTON PRESSURE CLEANERS



Briggs & Stratton pressure washers now give you the power to keep sidewalks, driveways, cladding and wood looking like new. Strip away mould stains, tough oil stains and chipped paint with ease.

500-36370**BRIGGS & STRATTON ELECTRIC PRESSURE WASHER**

- > 1880 PSI at a flow rate of 6.6L/per min
- > High pressure for a variety of cleaning jobs
- > Instant start/stop system- Only runs when spray gun trigger is pulled
- > Adjustable fan jet lance for greater versatility
- > Stainless steel piston axial pump with aluminium head offers corrosion resistance
- > Turbo nozzle wand cleans faster than a standard spray tip
- > On board detergent dispenser
- > 1 Year Warranty

**500-36374****BRIGGS & STRATTON STEAM ELECTRIC PRESSURE WASHER**

- > 2030 PSI
- > Integrated Steam Cleaner - Great for breaking down grease and oil for easy cleaning
- > Instant Start/Stop System - Only Runs when the spray gun trigger is pulled
- > Turbo Nozzle Wand - Cleans up to 40% faster than a standard spray tip
- > Metal Wand with 3 Quick-Connect Spray Tips - 0°, 15° & 40°
- > Onboard Chemical Detergent Tank - Easily Store and dispense cleaning detergent
- > 6 meter High-Pressure Hose
- > 1 Year Warranty

**500-36372****BRIGGS & STRATTON ELECTRIC PRESSURE WASHER**

- > 2030 PSI at a flow rate of 7.5L/per min
- > High pressure for a variety of cleaning jobs
- > Instant start/stop system- Only runs when spray gun trigger is pulled
- > Adjustable fan jet lance for greater versatility
- > Stainless steel piston axial pump with aluminium head offers corrosion resistance
- > Turbo nozzle wand cleans faster than a standard spray tip
- > On board detergent dispenser
- > 1 Year Warranty

