

SECTION 5

CARAVAN HARDWARE

(Product Group - 600)

Coast Access Doors	194 - 196
Grab Handles and Cabin Hooks	196 - 197
Thetford Service Doors	197 - 198
Rosettes, Nickels and Door Locks	198 - 199
Valterra Access Hatches	199 - 200
Window Parts	200
DGN Hinges	201
Caravan Cleaners, Touch Up Paint and Sealers	201 - 205

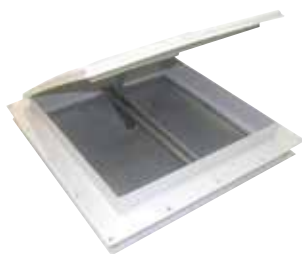
HATCHES & VENTS

(Product Group - 650)

Elixir Mini Vent	206
Ventline Vents and Spares	206 - 207
Unimaxx Replacement Vent Lids	207
Four Seasons Hatch and Spares	207 - 208
Fantastic Vents and Spares	208
Fiamma Hatches, Vents and Hatch Spares	208 - 210
MaxxAir Ventilation	210 - 211
Exterior, Rotary and Scupper Vents	211 - 212

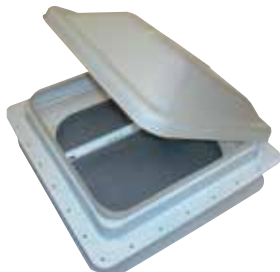


650-00070
ELIXIR MINI VENT
 Elixir mini vent 9" x 9"



650-00080
VENTLINE 14" X 14" METAL VENT

This vent does not have a fan, but does have an extra strong galvanized steel roof flanges in a painted white finish. It has a screw-in mount, while the dome is styled with an aerodynamic shape in white polypropylene. The screen frame has been designed with stylish radius corners (curved) and comes in two removable pieces which is great for cleaning.



650-00090
VENTLINE 14" X 14" METAL VENT (WITH FAN)

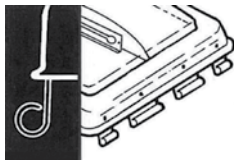
This Ventline Vent has a 12V DC motor making it able to power a fan for faster air delivery. Like 650-00080, it also has extra strong galvanized steel roof flanges in a painted white finish and mounts onto the roof of your RV with screws. The dome is also white with an aerodynamic design. The screen frame also has radius corners and consists of two removable pieces.



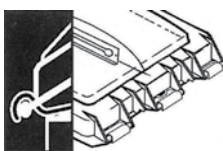
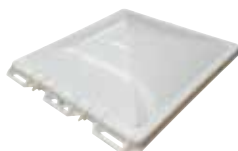
Specifications
 Cut-out required: 14 1/4" (36.2cm)

REPLACEMENT PLASTIC LID (VENTS)

650-00210
REPLACEMENT PLASTIC LID FOR OLD STYLE JENSEN 14" X 14" VENT

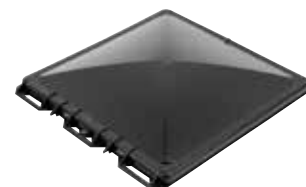


650-00212
REPLACEMENT PLASTIC LID FOR NEW STYLE JENSEN 14" X 14" VENT



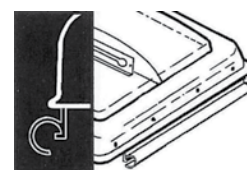
650-00214
JENSEN HATCH 14"X14" BLACK LID ONLY T/S NEW TYPE

Camco's Black Polypropylene Replacement Vent Lid for Jensen with pin hinge is impact-resistant and comes preassembled. It includes all mounting hardware for quick, easy installation on all 14" x 14" RV vents. Hardware is rust resistant.



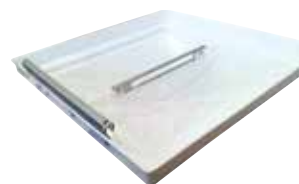
- > Made of durable, impact resistant polypropylene
- > Includes rust-resistant mounting hardware
- > Fits all 14 inch x 14 inch RV vents and replaces Jensen pre 1994 pin style vents
- > Reinforced center bar for added strength and stability
- > Vent lid is pre-assembled for quick and easy installation

650-00230
REPLACEMENT PLASTIC LID FOR OLD STYLE ELIXIR 14" X 14" VENT



650-00240
REPLACEMENT PLASTIC LID FOR VENTLINE 14" X 14" VENT

(to suit old metal clip connection)



650-00250
VENTLINE VENT REPLACEMENT LID - SMOKE



650-00450
VENTLINE REPLACEMENT LID
 White lid only, to suit new style plastic clip connection.



UNIMAXX UNIVERSAL VENT LID REPLACEMENT KIT

Replace damaged or old vent Lids with one, easy-to-install universal vent lid. The Unimaxx universal vent lid takes the hassle out of having to know what year your current lid was manufactured and who manufactured it! Replaces damaged vent lids on Elixir, Hengs, Jensen, Ventline and other roof vent assemblies.

- > Eliminates the need to match hinge types.
- > Preassembled
- > Includes all mounting hardware
- > Uv enforced polypropylene
- > Rust resistant hardware
- > Available in White and Smoke

**650-00260
UNIMAXX
UNIVERSAL
VENT LID
REPLACEMENT
KIT WHITE**



**650-00262
UNIMAXX
UNIVERSAL
VENT LID
REPLACEMENT
KIT SMOKE**



JENSEN SPARES

**650-00400
WINDER HANDLE
FOR JENSEN HATCH**



**650-00404
FAN BLADE FOR JENSEN
HATCH**



VENTLINE SPARES

**650-00452
BLACK ELEVATING KNOB**
Replacement knob only to open/close the vent lid.



**650-00454
VENTLINE 6" FAN BLADE**
A plastic fan blade to suit the Ventline 14" x 14" vent.



**650-00456
VENTLINE REPLACEMENT
FLY SCREEN**
With plastic framework and metal mesh, this replacement fly screen suits 14" x 14" Ventline vents with or without a fan.



**650-00458
VENTLINE OPERATOR
SHORT SHAFT**
Suits the old style connection, (spring locking clip with crank).



**650-00460
VENTLINE OPERATOR
SHORT SHAFT**
Suits the new style connection, has a plastic slide clip with crank.

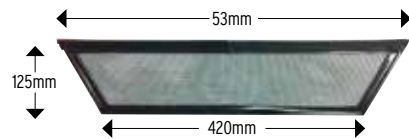


AUSTRALITE FOUR SEASONS HATCH SPARES

**650-00554
FOUR SEASONS LIFT
MECHANISM**



**650-00556
FOUR SEASONS HATCH FLY SCREEN**



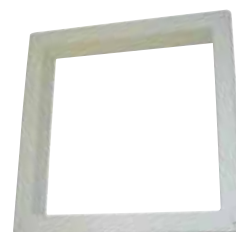
**650-00560
INTERNAL FRAME
TO SUIT NEW FOUR SEASONS HATCH 50MM**
(part number 650-00595)



650-00562
INTERNAL FRAME TO SUIT NEW FOUR SEASONS HATCH - 70MM
 (part number 650-00595)



650-01030
FANTASTIC VENT 4 1/4" WHITE GARNISH
 Suitable for use with 5000RBT, 6000RBT, 2250 and 3350.



Specifications
 Cut Out Dimensions: 345W x 345D (mm)

650-00597
AUSTRALITE FOUR SEASONS EVOLUTION HATCH 600 X 600



- > Fully designed and tested in Australia for Australasian conditions
- > Retains Camec's famous 4 season functionality
- > Classic 660x660 square cutout means no change, and also makes it retrofittable to upgrade your old 4 seasons hatch
- > Passive ventilation increased to 223cm² (was 161cm² on previous model)
- > Ergonomic vent controls
- > Each door has three opening positions (closed, rain mode, fully open)
- > New elegant design, matching the 500x700 4 Seasons Evolution Roof Hatch
- > Tough ASA construction resulting in improved sealant adhesion
- > Easy installation from inside the RV
- > Air Deflector integrated into housing.
- > No additional components required.



650-01064
LID ONLY FOR FANTASTIC VENT "WHITE"



650-02012
FIAMMA ROOF HATCH 160

With an elegant and aerodynamic design, the Roof Hatch 160 is quiet, thanks to the new outside cover and rubber seal. Its watertight system guarantees rain streams down without the possibility of it coming in. Made with quality UV-resistant material, it also features an adjustable centre support arm. Can be installed on roofs with depths from 25-50mm. Supplied with a permanent airflow system and mosquito net.



FANTASTIC VENTS

650-01011
FANTASTIC VENT 2250 WITH WHITE ARCHED LID

A ceiling controlled fan with three fan blade speeds. It fits the standard 14" x 14" opening and has a manual lift dome. It operates quietly and features a built-in thermostat, reversible airflow and a high profile base. Comes with a 2yr manufacturer's warranty.



Specifications
 Weight: 12lbs (5.4kg)

650-02018
FIAMMA TURBO VENT 160
 Installs in 380mm - 400mm openings with 300mm 10 Blade 12V Fan with polar control thermostat.



650-01021
FANTASTIC VENT 3350 WITH WHITE ARCHED LID

A ceiling controlled fan with three fan blade speeds. It fits the standard 14" x 14" opening and has a power lift dome with a manual override in case of emergency. It operates quietly and features a built-in thermostat, reversible airflow, an automatic 'close' function (if the rain sensor gets wet) and a high profile base. Comes with a 2yr manufacturer's warranty.



Specifications
 Weight: 12lbs (5.4kg)

650-02030
FIAMMA KOMBI 50CM X 50CM HATCH WHITE
 Opening on all four sides with convenient handles, the Kombi Hatch maintains constant RV ventilation. It is available with a roller blind which has a dark roller and a mosquito screen.



650-02204
FIAMMA WHITE LID
FOR VENT 50X50
(98683-118)



650-02356
FIAMMA VENT 50X50
OUTER FRAME WITH
RIGHT AND LEFT
ARMS



VENT 28 F AND TURBO-VENT KIT 28 F

The new 28cm x 28cm roof light is perfect for small rooms, ensuring improved interior light. The discreet and elegant design of the internal frame makes it suitable for any environment and the aerodynamic shape does not require the use of the spoiler.

Equipped with permanent ventilation and robust aluminium mosquito net. Thanks to the Sandwich System mounting system, it is not necessary to drill any further holes in the roof of the vehicle. Can be accessorised with the optional Kit Turbo Vent 28 F for motorising the roof light.

Features

- > Greater light and visibility
- > More aerodynamic
- > Complete with double layer cover
- > Equipped with fixed mosquito net
- > Sandwich system installation
- > Optional motorized ventilation kit

650-02064
FIAMMA VENT 28 F WHITE



650-02066
FIAMMA VENT 28 F CRYSTAL

Specifications

Dimensions: 28 x 28 cm
Outside dimensions: 32 x 34 cm
Internal dimensions: 31 x 34 cm
Inside light: 25 x 25 cm
Roof thickness (min - max): 2,8 - 6,0 cm
Permanent air flow: 80 cm²

650-02068
FIAMMA TURBO VENT KIT
T/S 28 F



Specifications

Voltage: 12 V
Absorbed power: 25 W
Max electric input: 1,9 A
Max air flow: 9 m³/min
Fan diameter: 180 mm
Permanent air flow: 50 cm²

FIAMMA HATCH SPARE PARTS

650-02200
STANDARD LID FOR FIAMMA
14" X 14" HATCH



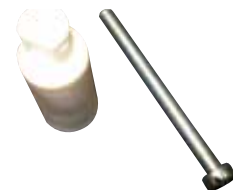
650-02202
LID 160 FOR FIAMMA
14" X 14" HATCH



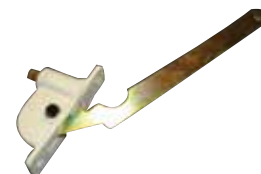
650-02208
FIAMMA WHITE LID
ONLY T/S VENT 28



650-02210
HANDLE EXTENSION
KIT FOR FIAMMA STD.
14" X 14" HATCH



650-02214
WINDING ARM ONLY
FOR FIAMMA
14" X 14" HATCH



650-02216
WINDING HANDLE KIT
ONLY FOR FIAMMA
TURBO VENT 1



650-02222
FIAMMA UNIVERSAL
KNOB & EXTENSION KIT

This universal extension kit allows Fiamma vents to be installed on thicker roofs with thicknesses from 3-8.5cm.



650-02314
FIAMMA ROLLO VENT
40

A roller blind system that is suitable for use on Fiamma 40cm x 40cm vents. It is fixed to the existing vent frame using the screws provided and still allows for permanent ventilation thanks to its side inlets.



Specifications	
Weight:	0.1kg

650-99000N
FIAMMA ROOF HATCH
VENT 160 (CRYSTAL LID)

Made from quality UV-resistant material, the Crystal Roof Hatch provides permanent airflow ventilation and has a mosquito screen to keep out the bugs. It has an aerodynamic design so a spoiler is not required for installation. The outer cover has an exclusive, patented rubber seal which guarantees a watertight system. It is interchangeable with older 40 x 40 cm Fiamma roof lights, as well as 36 x 36 (cm) - 42 x 42 (cm) roof lights thanks to the reinforced frame. To block out the sun, the Fiamma Rollo Vent 40 can be purchased.



Specifications	
Weight:	2.8kg

MAXXAIR VENTILATION SYSTEMS

RV ventilation has never been easier than with a MaxxFan. They've been used in the US RV market since 1988, and they are now exclusively available from Coast to Coast. The MaxxFan Plus and the MaxxFan Deluxe, both have a manual option and an electric opening option, and they also have a ceiling mounted control panel that is easy to use and read.



Removable Flyscreen



Twin Lifting Arms

Some other features include:

- > Removable flyscreen - simply twist the L-clamps and remove for cleaning!
- > Installs onto all standard 14" x 14" (356mm x 356mm) roof openings
- > Powerful 10-speed fan motor
- > Fan can run even if the lid is closed (select 'Ceiling Fan Mode') and can be used in "intake" and "exhaust" modes
- > Provides over 900CFM, keeping your RV cool and comfortable
- > Twin lifting arms limit vibrations cause by wind when in the 'open' position

650-03010
MAXXFAN
PLUS WITH
THERMOSTAT
AND MANUAL
LIFT



Specifications	
Amp Draw on High	2.6A
Amp Draw on Low	0.17A
Dimensions (closed)	461L x 420W x 97H (mm)
Dimensions (open)	461L x 420W x 311H (mm)
Installed Weight	4.1kg
Roof Thickness	50mm (min) - 110mm (max)

650-03012
MAXXFAN
PLUS WITH
THERMOSTAT,
POWER LIFT,
RAIN SENSOR
AND REMOTE



Specifications	
Amp Draw on High	2.6A
Amp Draw on Low	0.17A
Dimensions (closed)	461L x 420W x 97H (mm)
Dimensions (open)	461L x 420W x 311H (mm)
Installed Weight	4.1kg
Roof Thickness	50mm (min) - 110mm (max)

650-03014
MAXXFAN
DELUXE WITH
RAIN DOME,
THERMOSTAT
AND MANUAL
LIFT



Specifications	
Amp Draw on High	2.5A
Amp Draw on Low	0.16A
Dimensions (closed)	589L x 421W x 128H (mm)
Dimensions (open)	589L x 421W x 230H (mm)
Installed Weight	5.4kg
Permanent Airflow	82cm ²
Roof Thickness	25mm (min) - 90mm (max)

650-03016
MAXXFAN
DELUXE WITH
RAIN DOME,
THERMOSTAT,
POWER LIFT
AND REMOTE



Specifications	
Amp Draw on High	2.5A
Amp Draw on Low	0.16A
Dimensions (closed)	589L x 421W x 128H (mm)
Dimensions (open)	589L x 421W x 230H (mm)
Installed Weight	5.4kg
Roof Thickness	25mm (min) - 90mm (max)

650-04000
AERO FLO VENT COVER
FOR 14" X 14" ROOF VENT

Get high flow fresh air ventilated throughout your RV in rain or sunshine. It has a swing open top for easy cleaning and because it has vents on three sides it has 30% more open vent area than some other vent covers. Made from UV stabilized resin it mounts easily to existing 14" x 14" roof vents.



650-04020
MAXXAIR STANDARD
VENT COVER
 Translucent White



650-04030
CAMCO LIGHTS OUT
RETRACTABLE RV ROOF
VENT SHADE

Camco RV Cream Retractable Lights Out Vent Shade prevents light from shining into RV sleeping quarters at night. Easily mounts to ceiling and retracts into the space-efficient housing to allow light inside during the day. Opens to 14-1/8" x 19". Durable, lightweight vinyl's reflective finish reflects heat to keep RV cool.



- > Easy installation
- > Reflects heat to keep the RV cool
- > Opens to 14-1/8" x 19"
- > Prevent light from shining into RV at night
- > Easily retracts to let light in during the day

650-04100
MULLER WHITE PVC
EXTERIOR VENT
 Muller White PVC Exterior Vent



650-04110
ROTARY VENT PLASTIC
WHITE

Manufactured from high grade plastic (abs), exceptional on transportation vehicles such as buses, RV's, animal transport vehicles, delivery vans and marine vessels. Has a corrosion resistant stainless steel centre shaft.



Specifications
Dimensions: 240D x 120H (mm)

650-04150
SCUPPER VENT WHITE
(SMALL)

Powder coated aluminium in white with one spring.



Specifications
Dimensions: 170L x 112W (mm)

650-04155
SCUPPER VENT CUSTOM
BLACK - SMALL

Helps to pressurize the RV interior powder coated aluminium in black with a spring loaded door.



650-04160
SCUPPER VENT
INTERNAL FRAME
PLASTIC

Suitable for use with the small vent only (i.e. with 650-04150).



650-04170
SCUPPER VENT WHITE
(LARGE)

Powder coated aluminium in white with two springs.



Specifications

Dimensions: 242L x 149W x 20H (mm)

650-04175
SCUPPER VENT
INTERNAL FRAME
FOR LGE VENT



650-04178
SCUPPER VENT REPAIR KIT FOR SMALL VENT

650-04179
SCUPPER VENT REPAIR KIT FOR LARGE VENT